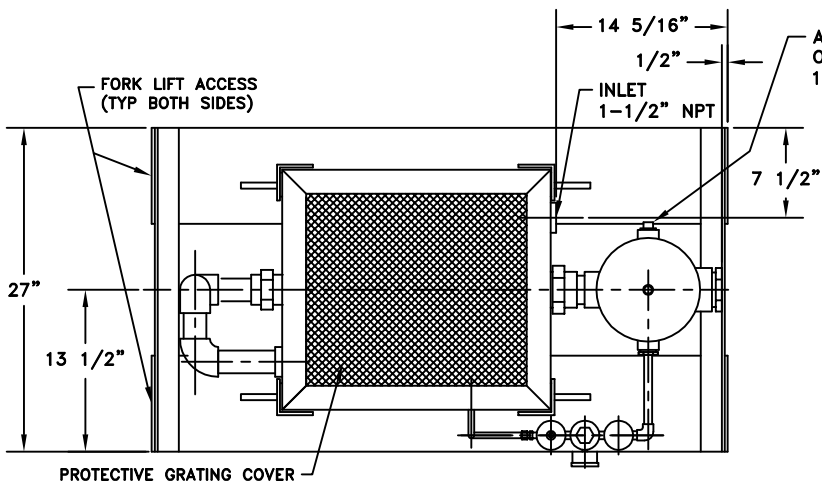
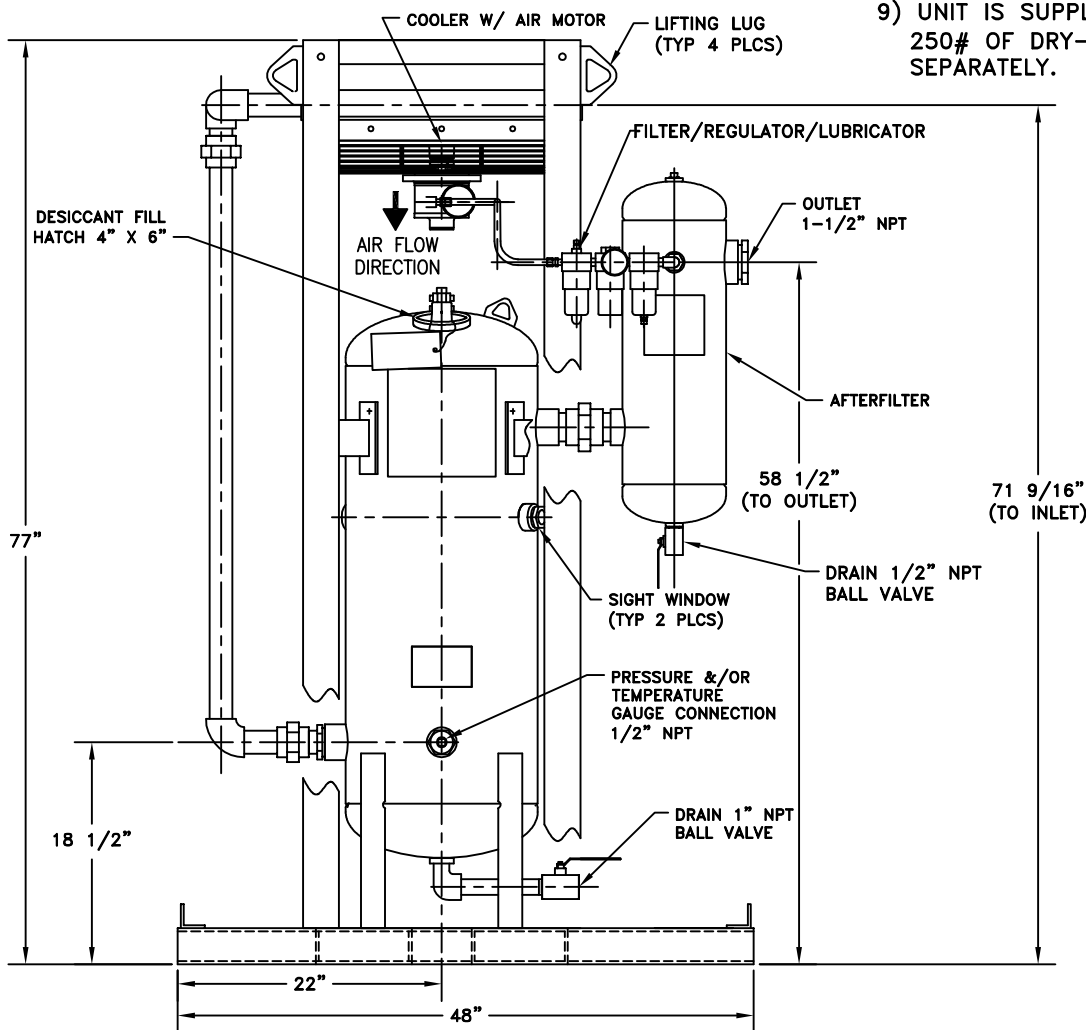


APP'L	DATE	LVL	ECN
	2-21-08	A	1200



NOTES:

- 1) SYSTEM MAXIMUM WORKING PRESSURE: 200 PSIG
- 2) SYSTEM INLET RATING: 250 SCFM @ 100 PSIG, 180°F (SIZED FOR 90°F AMBIENT, AND A 15°F APPROACH).
- 3) DRYER VESSEL IS BUILT TO ASME CODE PLUS CURRENT ADDENDA.
- 4) DRYER VESSEL IS STAMPED: "UM" SYMBOL.
- 5) DRYER VESSEL INTERIOR IS COATED FOR SUPERIOR CORROSION RESISTANCE. SYSTEM EXTERIOR (EXCLUDING COOLER CORE) IS COATED WITH ALKYD PRIMER AND WHITE ENAMEL FINISH.
- 6) APPROXIMATE WEIGHT OF UNIT: 660 LBS.
- 7) AFTERCOOLER RPM: 3450.
- 8) A 1" NPT COUPLING FOR PRESSURE RELIEF VALVE CONNECTION IS LOCATED ON THE BACK OF THE DRYER VESSEL.
- 9) UNIT IS SUPPLIED WITH INITIAL DESICCANT FILL: 250# OF DRY-O-LITE (5 BAGS) SHIPPED SEPARATELY.



PT# 80-1456

THIS DRAWING IS THE PROPERTY OF

VAN AIR INC.

AND IS SUBJECT TO RETURN UPON REQUEST. IT SHALL NOT BE COPIED OR DUPLICATED IN ANY MANNER AND SHALL NOT BE SUBMITTED TO OUTSIDE PARTIES FOR EXAMINATION WITHOUT THE CONSENT OF VAN AIR INC. IT SHALL BE USED FOR REFERENCE TO WORK UNDER CONTRACT OR PROPOSALS SUBMITTED BY VAN AIR INC. ONLY.

FREEDOM DRYER PACKAGE
FD-250

DRWN BY: JMY	DATE: 10-26-07	DRWG No.	REV
CHECKED: DFK	SCALE: NONE	SD-14316	A
APP'L: DFK	VAN AIR SYSTEMS		