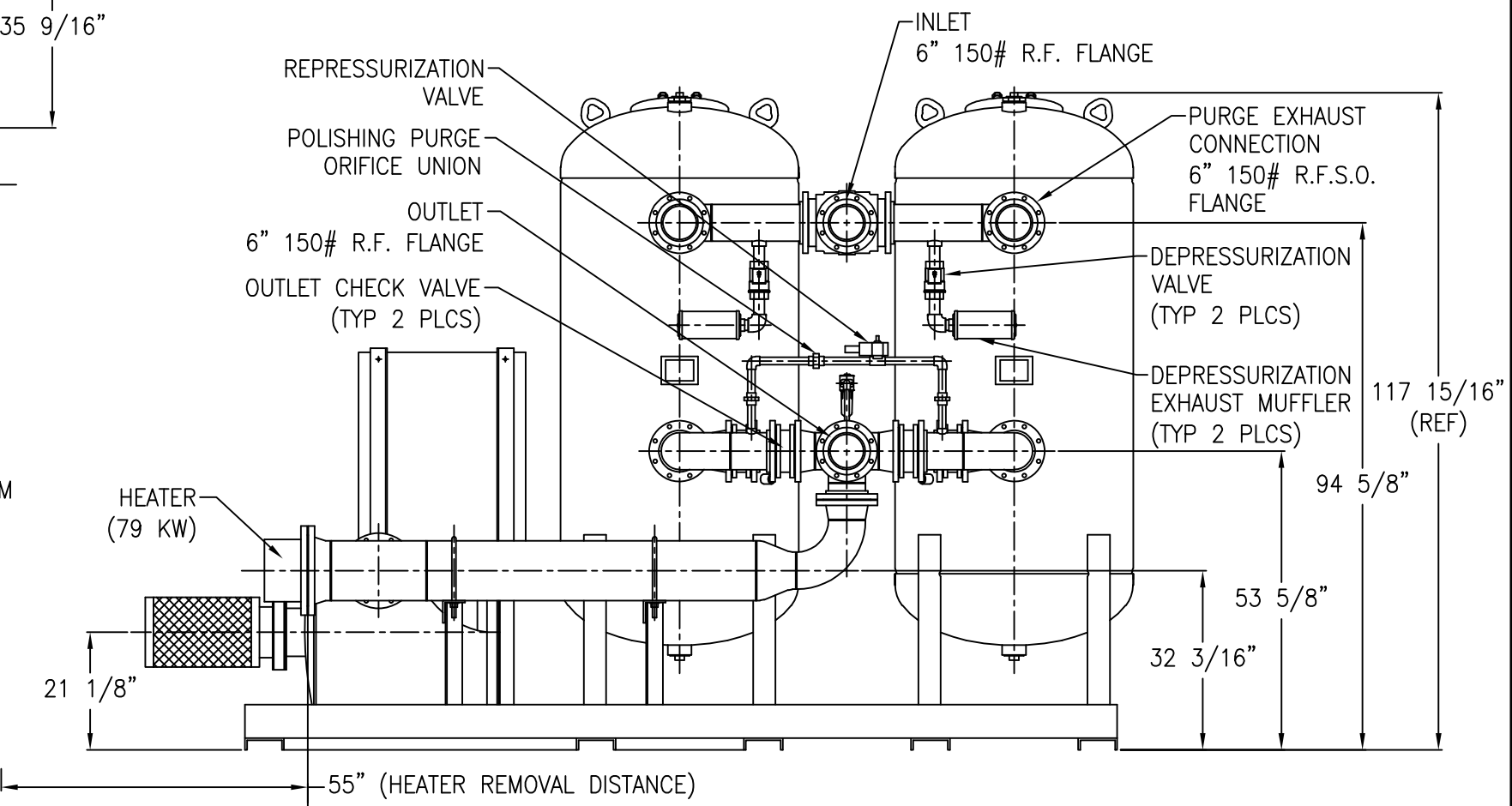


**NOTES:**

- 1) MAXIMUM WORKING PRESSURE: 150 PSIG.
- 2) MINIMUM WORKING PRESSURE: 75 PSIG.
- 3) RATED FLOW 4000 SCFM @ 100 PSIG, 100°F.
- 4) DRYER VESSELS CONFORM TO ASME CODE PLUS CURRENT ADDENDA.
- 5) OPERATING TEMPERATURE (INLET): 40°F TO 120°F.
- 6) OPERATING TEMPERATURE (AMBIENT): 40°F TO 120°F.
- 7) DRYER VESSELS STAMPED "U" SYMBOL.
- 8) APPROXIMATE WEIGHT OF UNIT: 6700 LBS (WITHOUT DESICCANT).
- 9) AMOUNT OF DESICCANT: 6150 LBS (ACTIVATED ALUMINA, SHIPPED SEPARATELY).
- 10) FLANGE BOLT HOLES STRADDLE CENTERLINES.
- 11) THE DRYER VESSELS, THE HEATER HOUSING, PIPING FROM THE HEATER HOUSING TO THE OUTLET PIPING, AND THE OUTLET PIPING (EXCLUDING THE OUTLET CHECK VALVES AND TEE) WILL BE COVERED WITH 2" THICK FIBERGLASS INSULATION WITH ALUMINUM COVER.



This drawing is the property of **VAN AIR SYSTEMS INC** and is subject to return upon request. It shall not be copied or duplicated in any manner and shall not be submitted to outside parties for examination without the consent of Van Air Systems Inc. It shall be used for reference to work under contract or proposals submitted by Van Air Systems Inc. only.

**FINAL ASSEMBLY FOR HB-4000 NEMA 1 WITH FAIL TO SWITCH ALARM, AND POLISHING PURGE**

DRWN BY: JMK	DATE: 04-11-01	DRWG No. SD-13860	REV
CHECKED:	SCALE: NONE		

APPL: **VAN AIR SYSTEMS INC**  
 Lake City, PA 16423 (814)774-2631 Fax: 814/774-3482 Telex: 91-4548