

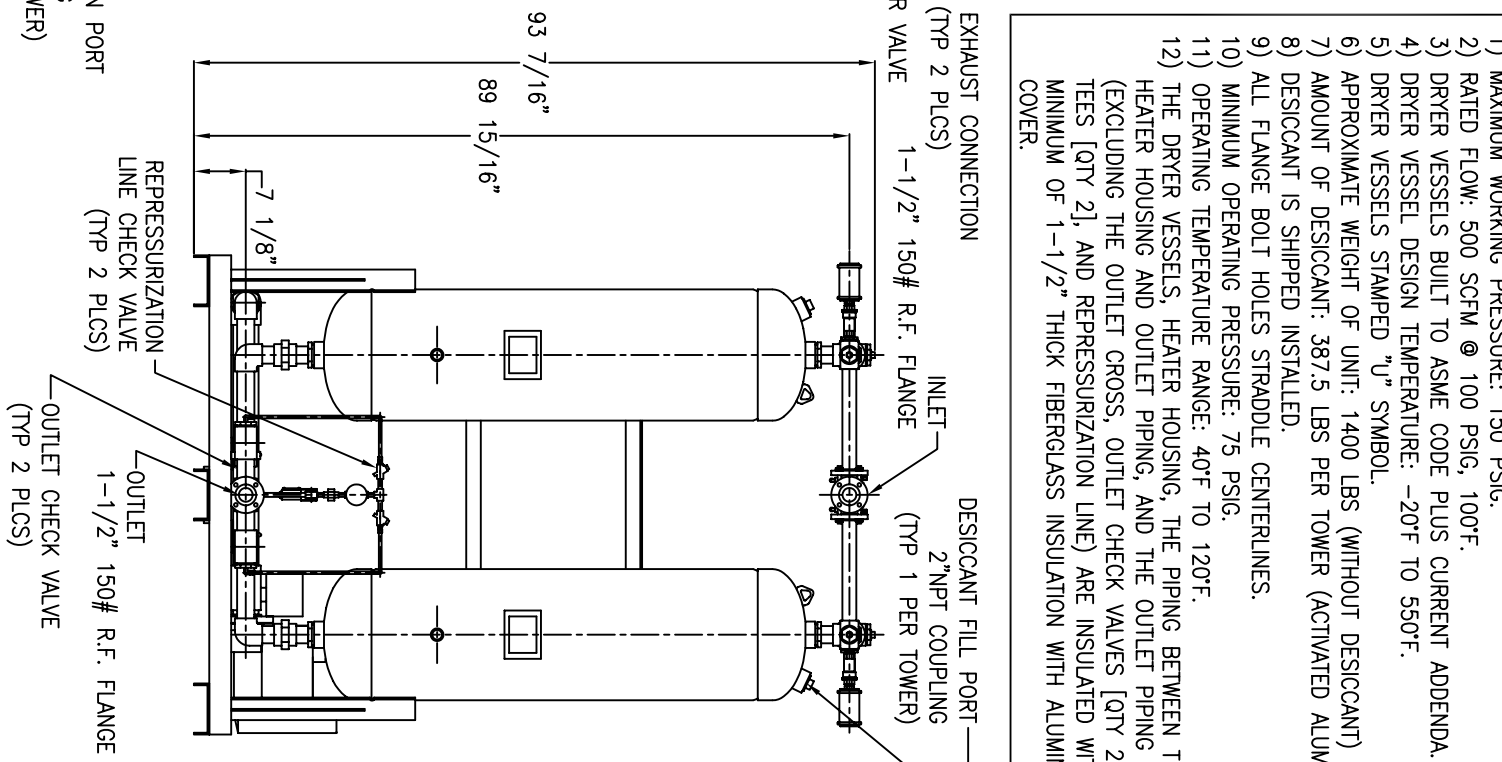
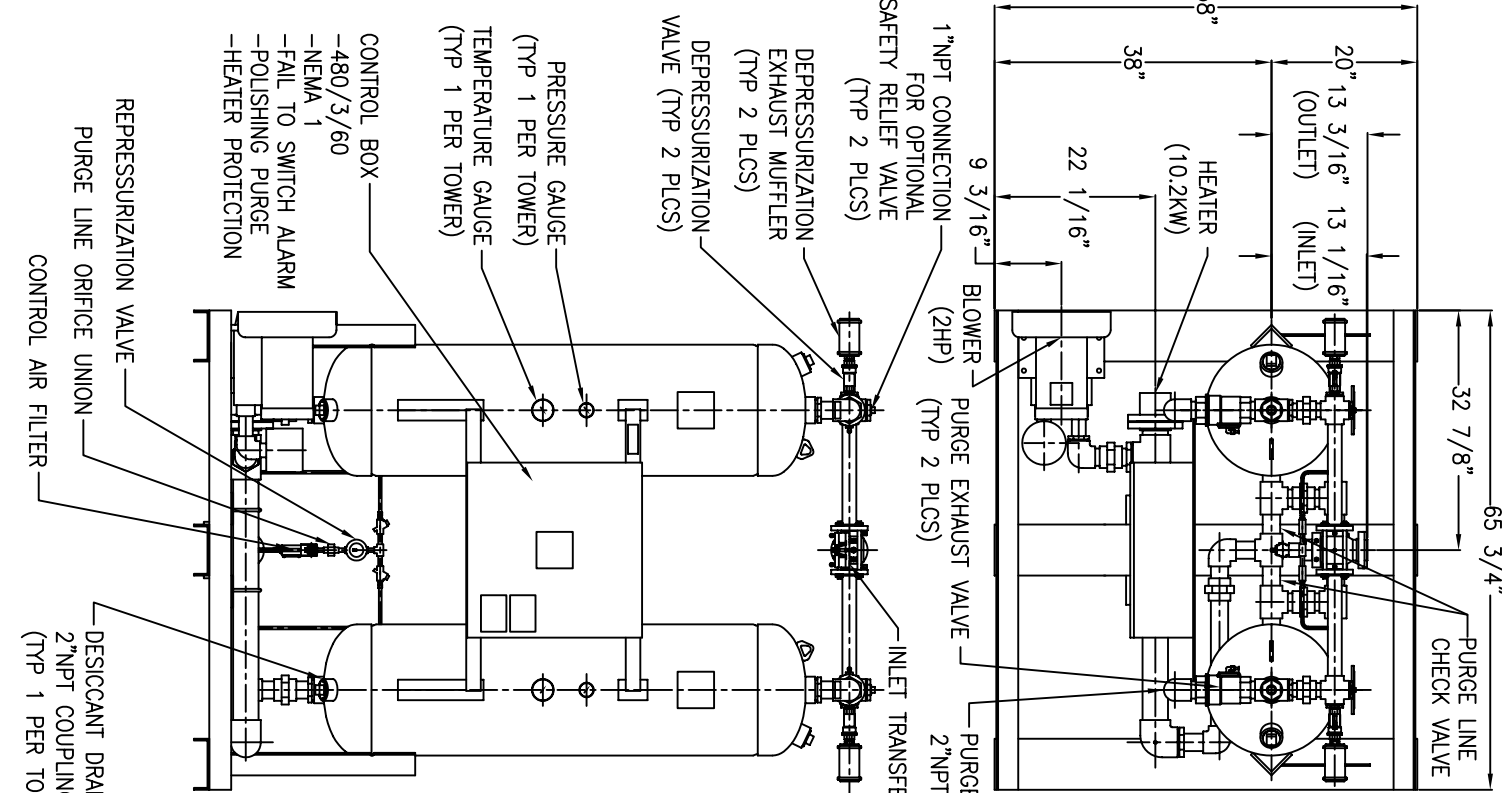
AND IS SUBJECT TO RETURN UPON REQUEST. IT SHALL NOT BE COPIED OR DUPLICATED IN ANY MANNER AND SHALL NOT BE SUBMITTED TO OUTSIDE PARTIES FOR EXAMINATION WITHOUT THE CONSENT OF VAN AIR INC. IT SHALL BE USED FOR REFERENCE TO WORK UNDER CONTRACT OR PROPOSALS SUBMITTED BY VAN AIR INC.

THIS DRAWING IS THE PROPERTY OF  
**VAN AIR INC.**

**VAN AIR SYSTEMS**  
 A DIVISION OF **VAN AIR INC.** LAKE CITY, PA 16423 (814)774-2631 FAX:(814)774-4065

REGENERATIVE DRYER HB500 (STD)  
 480V/3PH/60HZ, NEMA 1, WITH: FAIL TO SWITCH ALARM, POLISHING PURGE, AND HEATER PROTECTION

REV  
 DRWN BY: KLK  
 DATE: 1-29-07  
 DRWG No. SD-14250  
 CHECKED:  
 SCALE: NONE  
 APPL:



- NOTES:
- 1) MAXIMUM WORKING PRESSURE: 150 PSIG.
  - 2) RATED FLOW: 500 SCFM @ 100 PSIG, 100°F.
  - 3) DRYER VESSELS BUILT TO ASME CODE PLUS CURRENT ADDENDA.
  - 4) DRYER VESSEL DESIGN TEMPERATURE: -20°F TO 550°F.
  - 5) DRYER VESSELS STAMPED "U" SYMBOL.
  - 6) APPROXIMATE WEIGHT OF UNIT: 1400 LBS (WITHOUT DESICCANT)
  - 7) AMOUNT OF DESICCANT: 387.5 LBS PER TOWER (ACTIVATED ALUMINA).
  - 8) DESICCANT IS SHIPPED INSTALLED.
  - 9) ALL FLANGE BOLT HOLES STRADDLE CENTERLINES.
  - 10) MINIMUM OPERATING PRESSURE: 75 PSIG.
  - 11) OPERATING TEMPERATURE RANGE: 40°F TO 120°F.
  - 12) THE DRYER VESSELS, HEATER HOUSING, THE PIPING BETWEEN THE HEATER HOUSING AND OUTLET PIPING, AND THE OUTLET PIPING (EXCLUDING THE OUTLET CROSS, OUTLET CHECK VALVES [QTY 2], TEES [QTY 2], AND REPRESSURIZATION LINE) ARE INSULATED WITH A MINIMUM OF 1-1/2" THICK FIBERGLASS INSULATION WITH ALUMINUM COVER.

APP'L	DATE	LVL	ECN