

AND IS SUBJECT TO RETURN UPON REQUEST. IT SHALL NOT BE COPIED OR DUPLICATED IN ANY MANNER AND SHALL NOT BE SUBMITTED TO OUTSIDE PARTIES FOR EXAMINATION WITHOUT THE CONSENT OF VAN AIR SYSTEMS. IT SHALL BE USED FOR REFERENCE TO WORK UNDER CONTRACT OR PROPOSALS SUBMITTED BY VAN AIR SYSTEMS ONLY.

VAN AIR SYSTEMS

THIS DRAWING IS THE PROPERTY OF

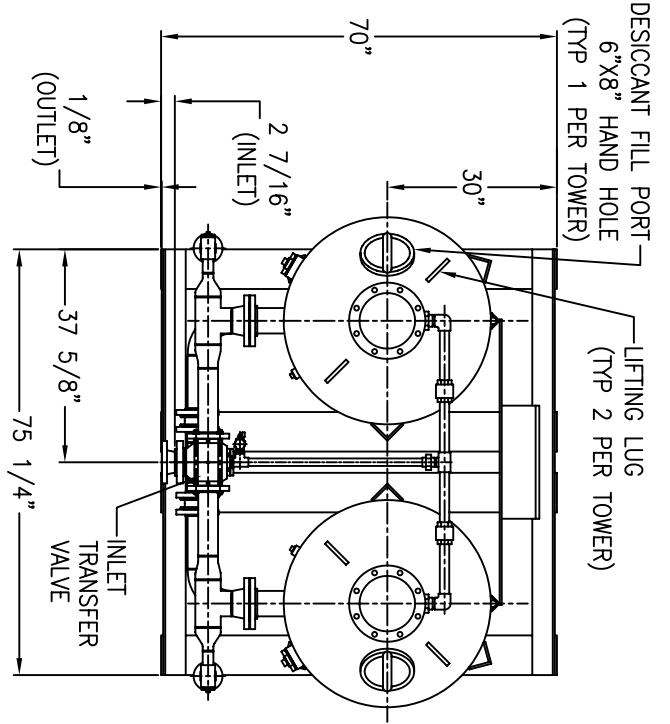
HEATED REGEN DRYER HI-2000

460V/3PH/60HZ, NEMA 1

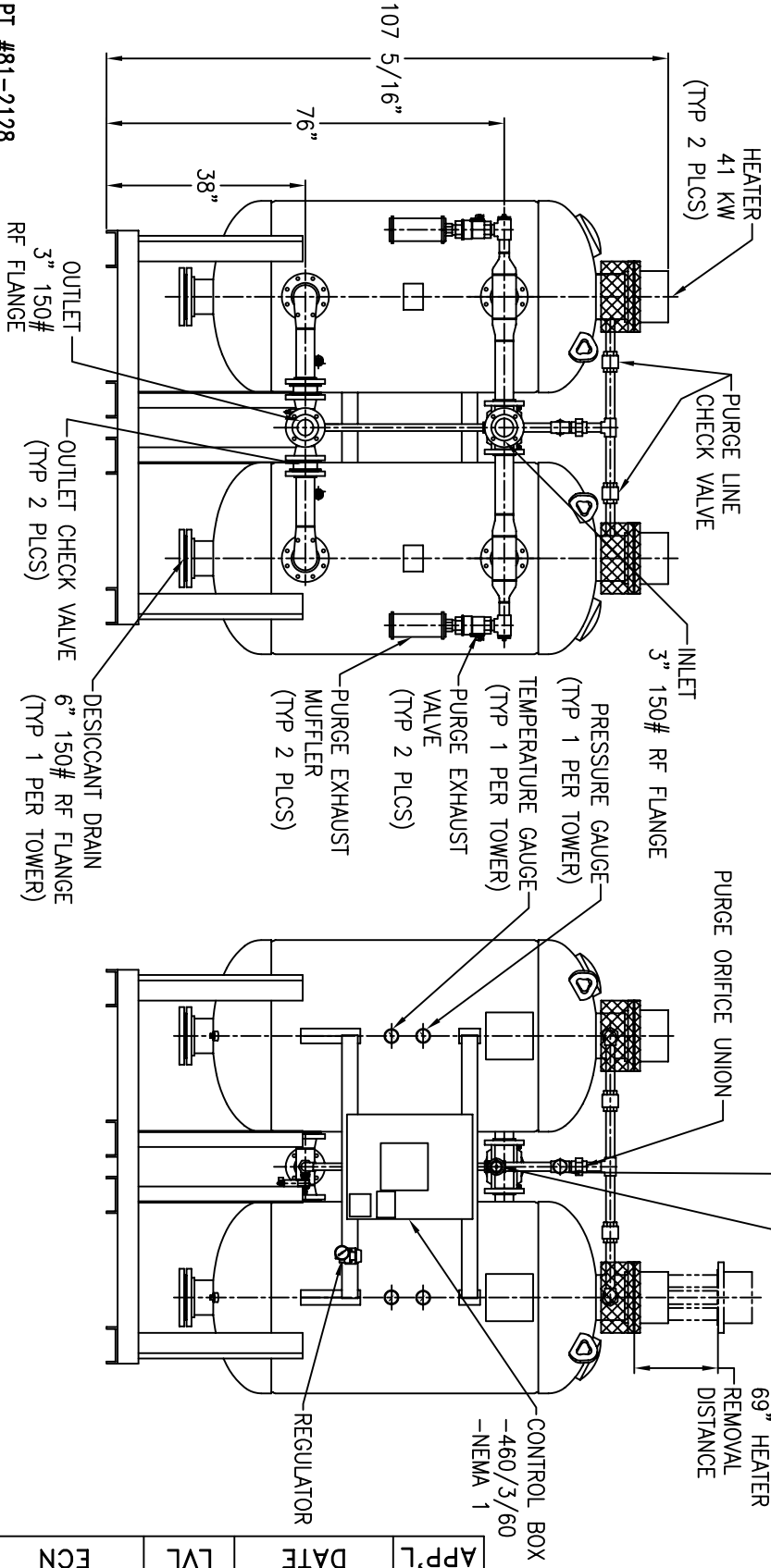
DRWN BY: JMK	DATE: 04-13-04	DRWG No.	SD-14085
CHECKED:	SCALE: NONE		
APP'L:			

A DIVISION OF **VAN AIR INC.** LAKE CITY, PA 16423 (814)774-2631 FAX:(814)774-4065

PT #81-2128



- NOTES:
- 1) MAXIMUM WORKING PRESSURE: 150 PSIG.
 - 2) MINIMUM WORKING PRESSURE: 75 PSIG.
 - 3) RATED FLOW 2000 SCFM @ 100 PSIG, 100°F.
 - 4) DRYER VESSELS CONFORM TO ASME CODE PLUS CURRENT ADDENDA.
 - 5) OPERATING TEMPERATURE (INLET): 40°F TO 120°F.
 - 6) DRYER VESSELS STAMPED "U" SYMBOL.
 - 7) APPROXIMATE WEIGHT OF UNIT: 3000 LBS (WITHOUT DESICCANT).
 - 8) AMOUNT OF DESICCANT: 3100 LBS (ACTIVATED ALUMINA, SHIPPED SEPARATELY).
 - 9) FLANGE BOLT HOLES STRADDLE CENTERLINES.



APP'L	DATE	LVL	ECN
CONTROL BOX -460/3/60 -NEMA 1			