

AND IS SUBJECT TO RETURN UPON REQUEST. IT SHALL NOT BE COPIED OR DUPLICATED IN ANY MANNER AND SHALL NOT BE SUBMITTED TO OUTSIDE PARTIES FOR EXAMINATION WITHOUT THE CONSENT OF VAN AIR INC. IT SHALL BE USED FOR REFERENCE TO WORK UNDER CONTRACT OR PROPOSALS SUBMITTED BY VAN AIR INC. ONLY.

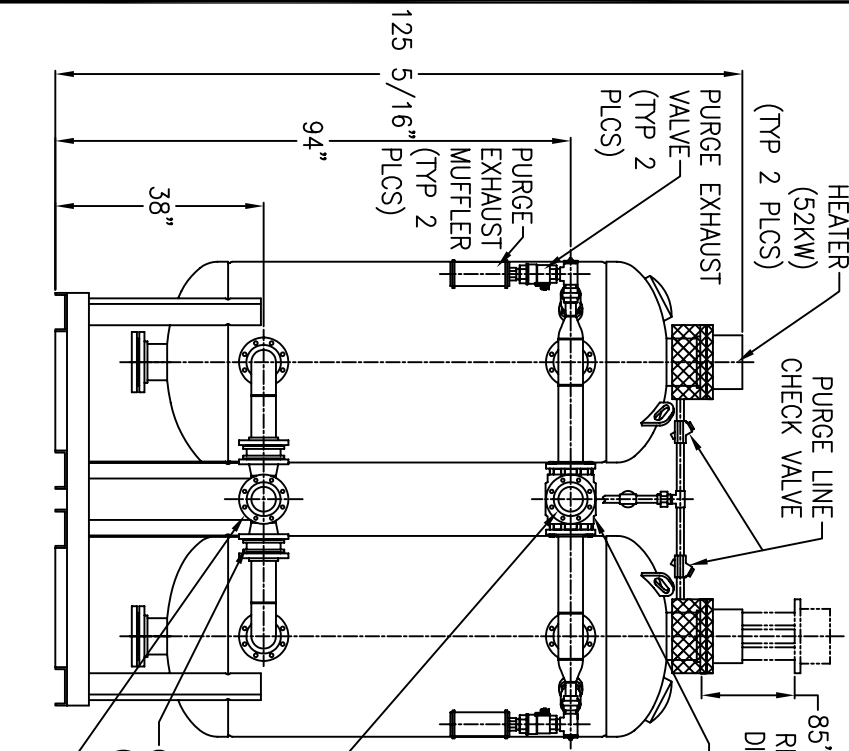
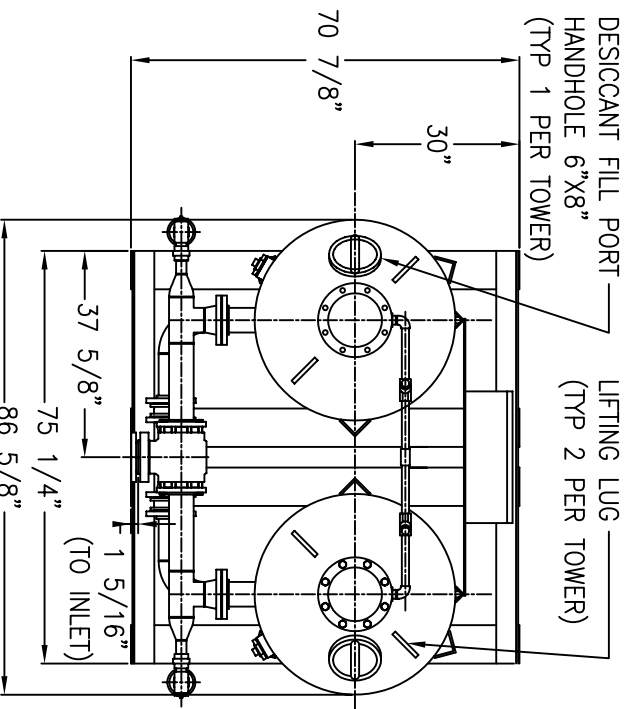
THIS DRAWING IS THE PROPERTY OF
VAN AIR INC.

REGENERATIVE DRYER HI-2500

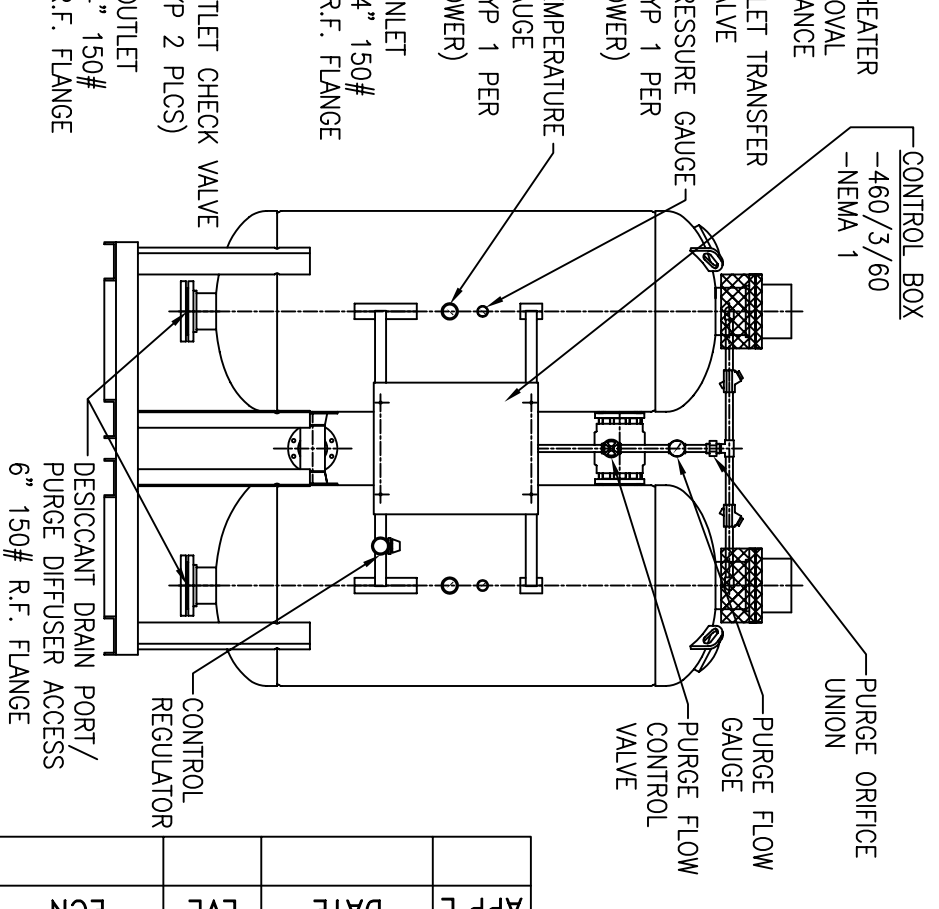
460V/3PH/60HZ, NEMA 1

DRWN BY: JMK	DATE: 10-01-04	DRWG No.	SD-14112
CHECKED:	SCALE: NONE		
APPL:			

VAN AIR SYSTEMS
 A DIVISION OF VAN AIR INC. LAKE CITY, PA 16423 (814)774-2631 FAX:(814)774-4065



- NOTES:**
- 1) MAXIMUM WORKING PRESSURE: 150 PSIG.
 - 2) MINIMUM WORKING PRESSURE: 75 PSIG.
 - 3) RATED FLOW 2500 SCFM @ 100 PSIG, 100°F.
 - 4) DRYER VESSELS CONFORM TO ASME CODE PLUS CURRENT ADDENDA.
 - 5) OPERATING TEMPERATURE (INLET): 40°F TO 120°F.
 - 6) OPERATING TEMPERATURE (AMBIENT): 40°F TO 120°F.
 - 7) DRYER VESSELS STAMPED "U" SYMBOL.
 - 8) APPROXIMATE WEIGHT OF UNIT: 4800 LBS (WITHOUT DESICCANT).
 - 9) AMOUNT OF DESICCANT: 3875 LBS (ACTIVATED ALUMINA, SHIPPED SEPARATELY).
 - 10) FLANGE BOLT HOLES STRADDLE CENTERLINES.



APP'L	DATE	LVL	ECN