

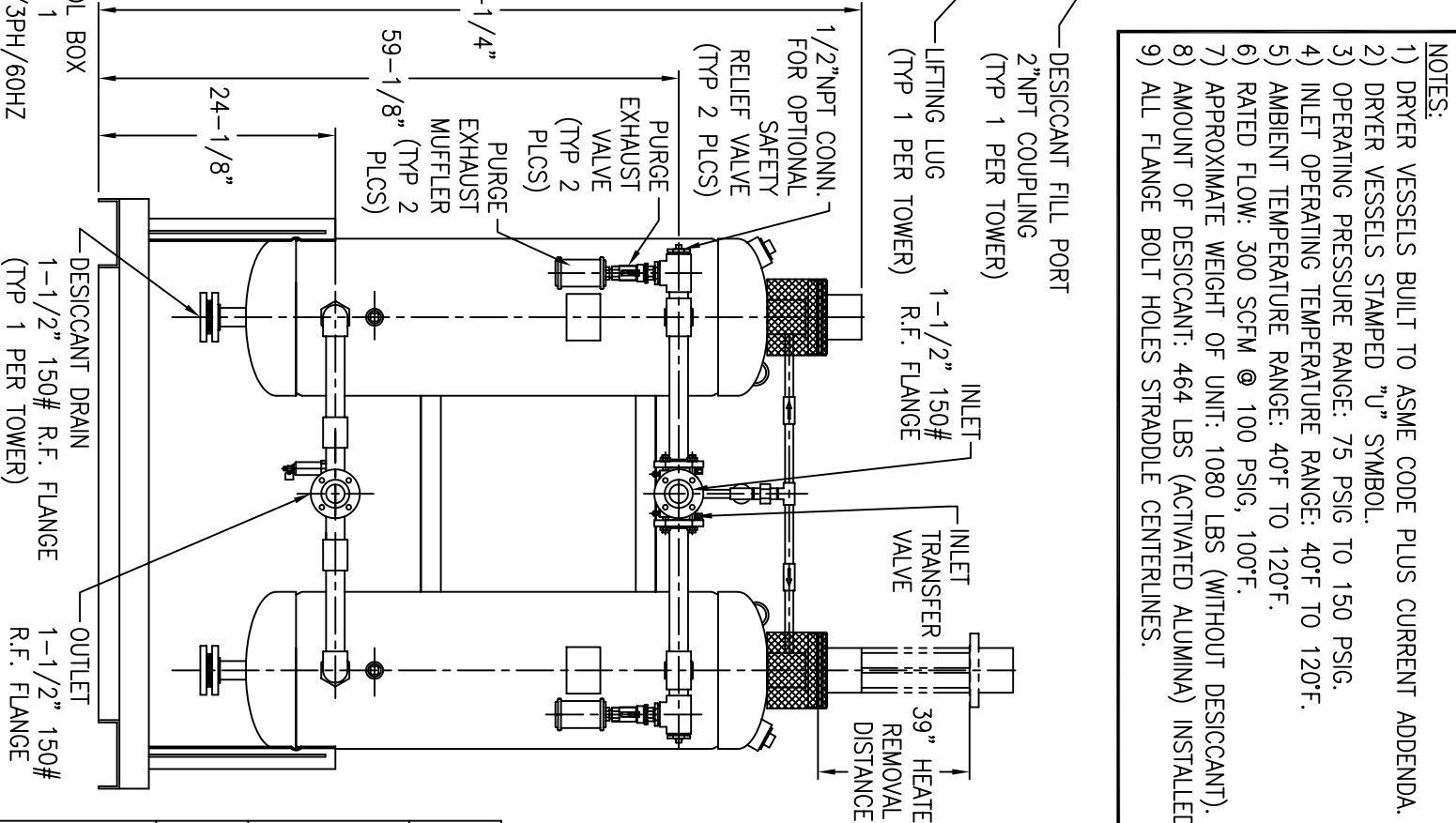
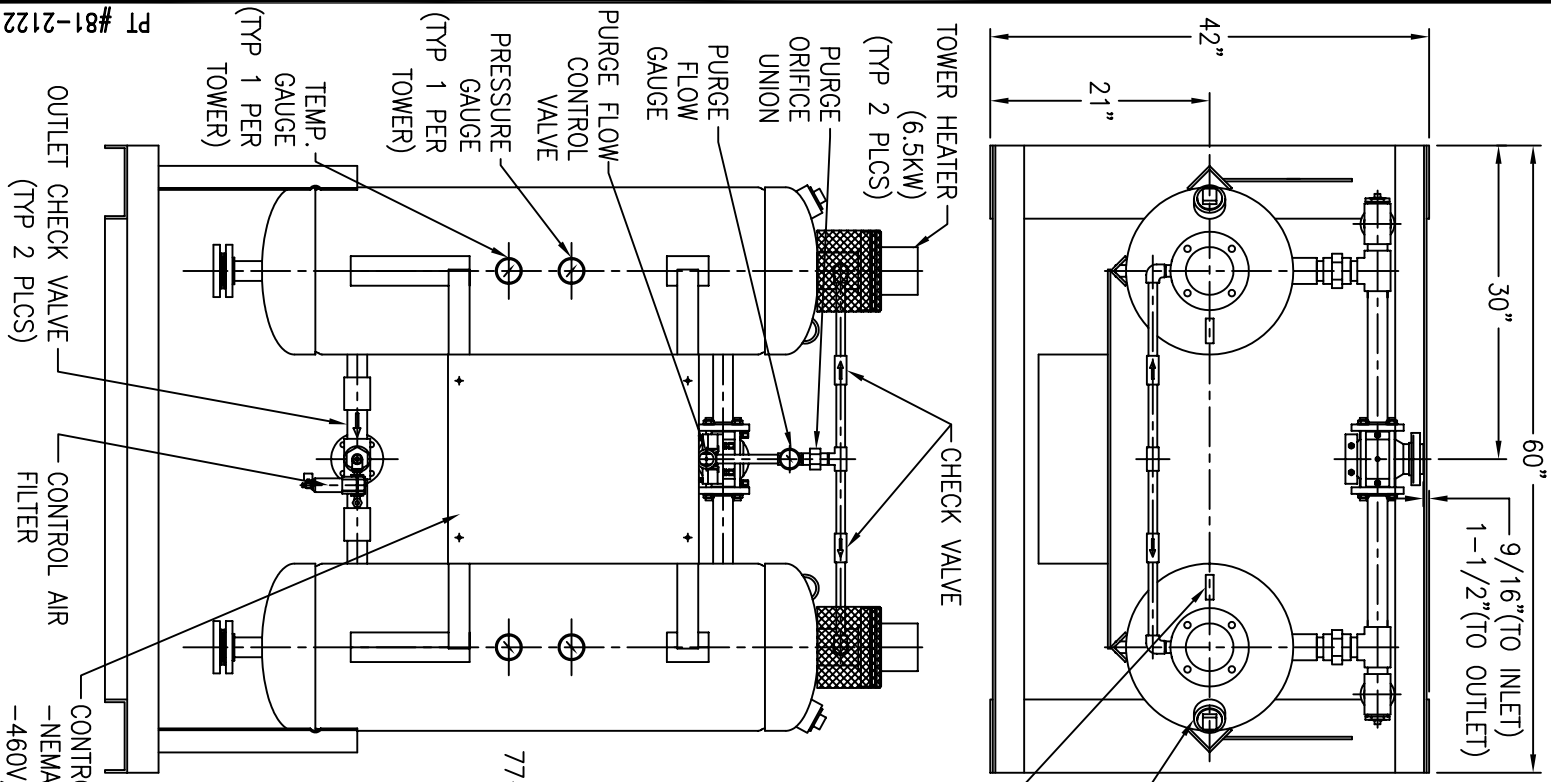
AND IS SUBJECT TO RETURN UPON REQUEST. IT SHALL NOT BE COPIED OR DUPLICATED IN ANY MANNER AND SHALL NOT BE SUBMITTED TO OUTSIDE PARTIES FOR EXAMINATION WITHOUT THE CONSENT OF VAN AIR SYSTEMS. IT SHALL BE USED FOR REFERENCE TO WORK UNDER CONTRACT OR PROPOSALS SUBMITTED TO VAN AIR SYSTEMS ONLY.

**VAN AIR SYSTEMS**

THIS DRAWING IS THE PROPERTY OF

APPL:	DRWN BY: JMK	DATE: 04-22-02	DRWG No. SD-13919	REV
CHECKED:	SCALE: NONE			

# INTERNALLY HEATER REGEN DRYER HI-300 NEMA 1 STANDARD



- NOTES:**
- 1) DRYER VESSELS BUILT TO ASME CODE PLUS CURRENT ADDENDA.
  - 2) DRYER VESSELS STAMPED "U" SYMBOL.
  - 3) OPERATING PRESSURE RANGE: 75 PSIG TO 150 PSIG.
  - 4) INLET OPERATING TEMPERATURE RANGE: 40°F TO 120°F.
  - 5) AMBIENT TEMPERATURE RANGE: 40°F TO 120°F.
  - 6) RATED FLOW: 300 SCFM @ 100 PSIG, 100°F.
  - 7) APPROXIMATE WEIGHT OF UNIT: 1080 LBS (WITHOUT DESICCANT).
  - 8) AMOUNT OF DESICCANT: 464 LBS (ACTIVATED ALUMINA) INSTALLED.
  - 9) ALL FLANGE BOLT HOLES STRADDLE CENTERLINES.

APP'L	DATE	LVL	ECN
-------	------	-----	-----