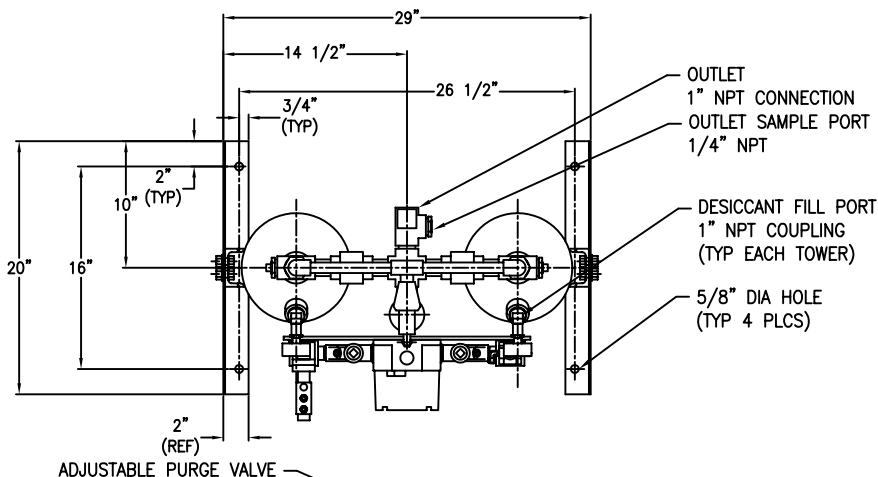
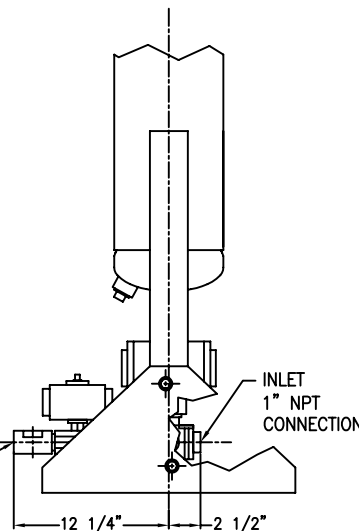
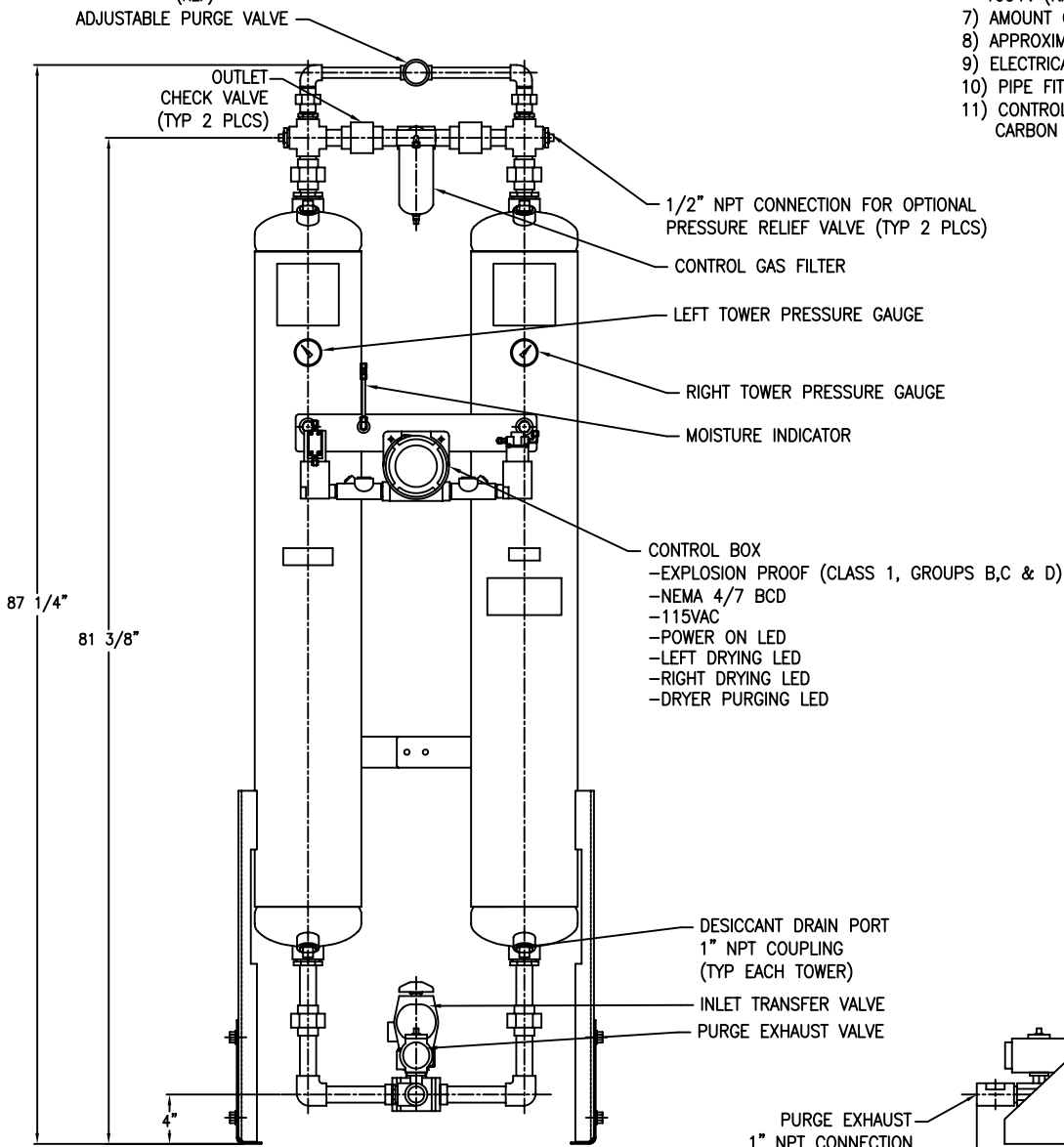


APP'L	DATE	LVL	ECN



**NOTES:**

- 1) VESSELS BUILT TO ASME CODE PLUS CURRENT ADDENDA.
- 2) VESSELS ARE STAMPED WITH 'UM' SYMBOL.
- 3) DRYER AMBIENT OPERATING TEMP RANGE: 40°F TO 120°F.
- 4) DRYER OPERATING PRESSURE RANGE: 80 TO 280 PSIG.
- 5) DRYER INLET OPERATING TEMP. RANGE: 40°F TO 120°F.
- 6) DRYER RATED FLOW: 150 SCFM (216 MSCFD) @ 100 PSIG, 100°F. (NATURAL GAS)
- 7) AMOUNT OF DESICCANT: 165 LBS (82.5 LBS PER TOWER).
- 8) APPROXIMATE WEIGHT OF UNIT: 310 LBS (W/O DESICCANT)
- 9) ELECTRICAL REQUIREMENTS: 12VDC, 1.5 AMP
- 10) PIPE FITTINGS ARE FORGED STEEL PER ANSI B16.11
- 11) CONTROL TUBING IS 316 SS. TUBE FITTINGS ARE CARBON STEEL.



THIS DRAWING IS THE PROPERTY OF

**VAN AIR INC.**

AND IS SUBJECT TO RETURN UPON REQUEST. IT SHALL NOT BE COPIED OR DUPLICATED IN ANY MANNER AND SHALL NOT BE SUBMITTED TO OUTSIDE PARTIES FOR EXAMINATION WITHOUT THE CONSENT OF VAN AIR INC. IT SHALL BE USED FOR REFERENCE TO WORK UNDER CONTRACT OR PROPOSALS SUBMITTED BY VAN AIR INC. ONLY.

**HEATLESS REGEN DRYER  
HLSX150-115VAC**

PT #81-2320

DRWN BY: JMK	DATE: 05-26-09	DRWG No.	SD-14436	REV
CHECKED:	SCALE: NONE			
APP'L:	<b>VAN GAS TECHNOLOGIES™</b>			