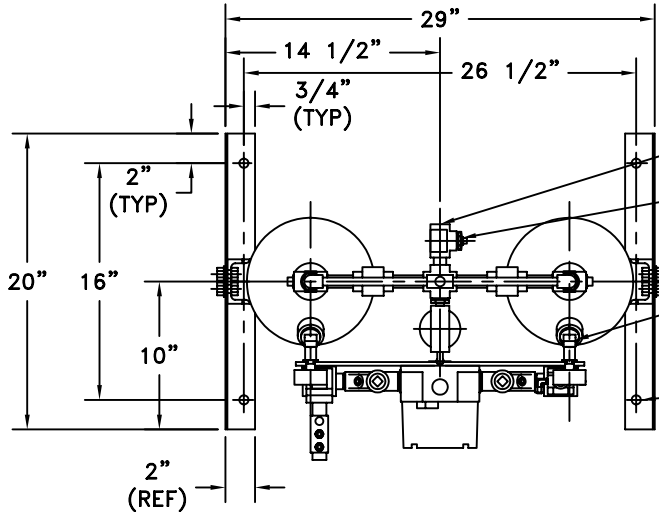


APP'L	DATE	LVL	ECN



OUTLET
1/2" NPT CONNECTION
OUTLET SAMPLE PORT
1/4" NPT

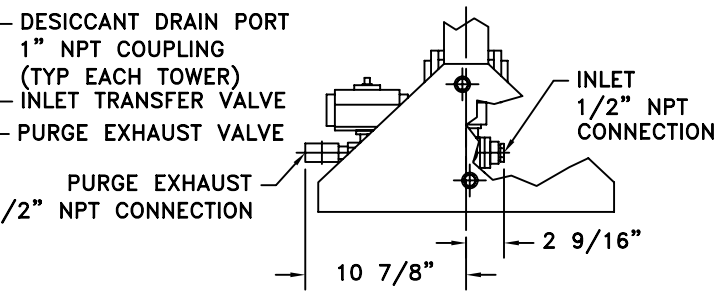
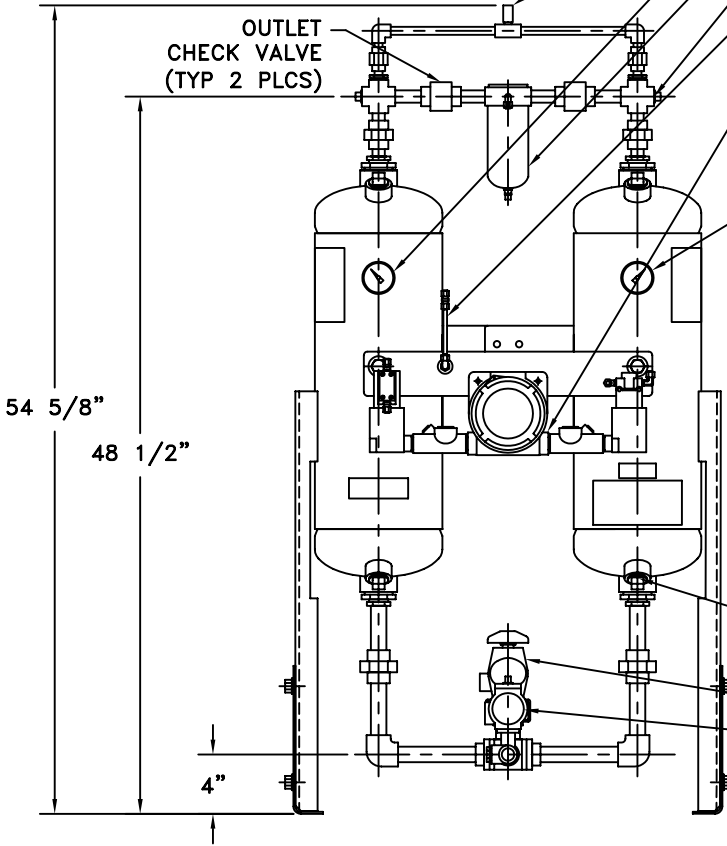
DESICCANT FILL PORT
1" NPT COUPLING
(TYP EACH TOWER)

5/8" DIA HOLE
(TYP 4 PLCS)

ADJUSTABLE PURGE VALVE
LEFT TOWER PRESSURE GAUGE
CONTROL GAS FILTER
1/2" NPT CONNECTION FOR OPTIONAL
PRESSURE RELIEF VALVE (TYP 2 PLCS)
MOISTURE INDICATOR

CONTROL BOX
-EXPLOSION PROOF (CLASS 1, GROUPS B,C & D)
-NEMA 4/7BCD
-12VDC
-POWER ON LED
-LEFT DRYING LED
-RIGHT DRYING LED
-DRYER PURGING LED
RIGHT TOWER PRESSURE GAUGE

- NOTES:
- 1) VESSELS BUILT TO ASME CODE PLUS CURRENT ADDENDA.
 - 2) VESSELS ARE STAMPED WITH 'UM' SYMBOL.
 - 3) DRYER AMBIENT OPERATING TEMP RANGE: 40°F TO 120°F.
 - 4) DRYER OPERATING PRESSURE RANGE: 80 TO 280 PSIG.
 - 5) DRYER INLET OPERATING TEMP. RANGE: 40°F TO 120°F.
 - 6) DRYER RATED FLOW: 55 SCFM (79 MSCFD) @ 100 PSIG, 100°F. (NATURAL GAS)
 - 7) AMOUNT OF DESICCANT: 67 LBS (33.5 LBS PER TOWER).
 - 8) APPROXIMATE WEIGHT OF UNIT: 210 LBS (W/O DESICCANT)
 - 9) ELECTRICAL REQUIREMENTS: 12VDC, 1.5 AMP
 - 10) PIPE FITTINGS ARE FORGED STEEL PER ANSI B16.11
 - 11) CONTROL TUBING IS 316 SS. TUBE FITTINGS ARE CARBON STEEL.



THIS DRAWING IS THE PROPERTY OF
VAN AIR INC.

HEATLESS REGEN DRYER
HLSX55-12VDC

PT # 81-2367

AND IS SUBJECT TO RETURN UPON REQUEST. IT SHALL NOT BE COPIED OR DUPLICATED IN ANY MANNER AND SHALL NOT BE SUBMITTED TO OUTSIDE PARTIES FOR EXAMINATION WITHOUT THE CONSENT OF VAN AIR INC. IT SHALL BE USED FOR REFERENCE TO WORK UNDER CONTRACT OR PROPOSALS SUBMITTED BY VAN AIR INC. ONLY.

DRWN BY: JMK	DATE: 08-11-08	DRWG No. SD-14370	REV
CHECKED:	SCALE: NONE		

APP'L: **VAN GAS TECHNOLOGIES™**