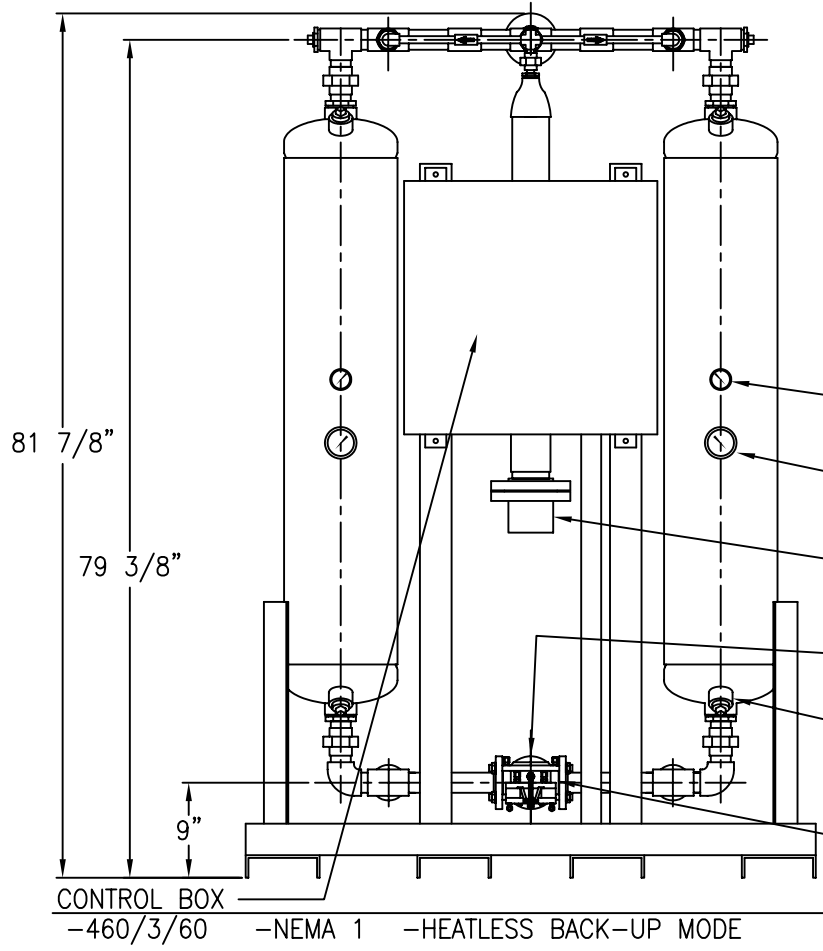


- PURGE EXHAUST MUFFLER (TYP 2 PLCS)
- PURGE EXHAUST VALVE (TYP 2 PLCS)
- LIFTING LUG TYP 2 PER TOWER (SHOWN IN THIS VIEW ONLY)
- 4-3/8"(INLET)  
3-1/2"(OUTLET)

- NOTES:**
- 1) OPERATING PRESSURE RANGE: 75-150 PSIG.
  - 2) INLET TEMPERATURE RANGE: 40°F TO 120°F.
  - 3) AMBIENT TEMPERATURE RANGE: 40°F TO 120°F.
  - 4) RATED FLOW: 150 SCFM @ 100 PSIG, 100°F.
  - 5) VESSELS BUILT TO ASME CODE PLUS CURRENT ADDENDA.
  - 6) VESSELS STAMPED "UM" SYMBOL.
  - 7) HEATER HOUSING, PIPING FROM HEATER HOUSING TO OUTLET PIPING, OUTLET PIPING, (EXCLUDING OUTLET & OUTLET CHECK VALVES) AND TOP THIRD OF VESSELS ARE INSULATED. (1-1/2" MINIMUM THICKNESS FIBERGLASS WITH ALUMINUM COVER).
  - 8) THE PURGE LINE CONTAINS A PURGE FLOW GAUGE, PURGE ORIFICE & PURGE FLOW CONTROL VALVE.
  - 9) DESICCANT: 250 LBS ACTIVATED ALUMINA (SHIPPED SEPARATELY)
  - 10) APPROXIMATE WEIGHT OF UNIT: 670 LBS. (WITHOUT DESICCANT)



- PRESSURE GAUGE (TYP 1 PER TOWER)
  - TEMPERATURE GAUGE (TYP 1 PER TOWER)
  - FLANGED IMMERSION HEATER (2.5 KW)
  - INLET 1-1/2" 150# R.F. FLANGE
  - DESICCANT DRAIN PORT 1 1/4"NPT CPLG. (TYP 1 PER TOWER)
  - INLET TRANSFER VALVE
- CONTROL BOX  
-460/3/60 -NEMA 1 -HEATLESS BACK-UP MODE

PT #81-2023

This drawing is the property of **VAN AIR SYSTEMS INC** and is subject to return upon request. It shall not be copied or duplicated in any manner and shall not be submitted to outside parties for examination without the consent of Van Air Systems Inc. It shall be used for reference to work under contract or proposals submitted by Van Air Systems Inc. only.

## REGENERATIVE DRYER HP150

460/3/60, NEMA 1, HEATLESS BACK-UP MODE

DRWN BY: WLN	DATE: 12-2-98	DRWG No. SD-13653	REV
CHECKED:	SCALE: NONE		

APPL: **VAN AIR SYSTEMS INC**  
 Lake City, PA 16423 (814)774-2631 Fax: 814/774-3482 Telex: 91-4548