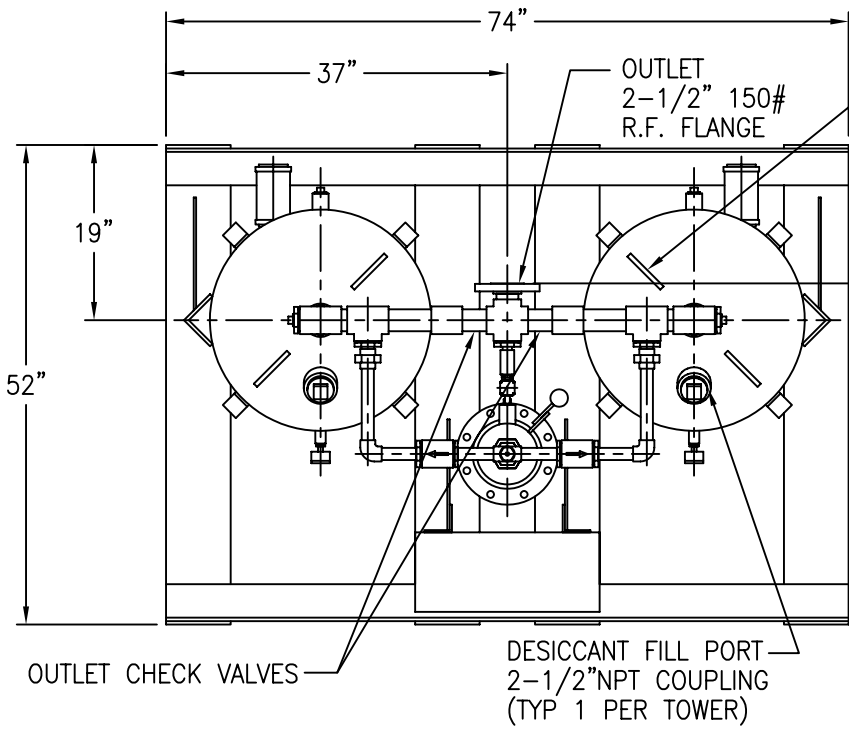


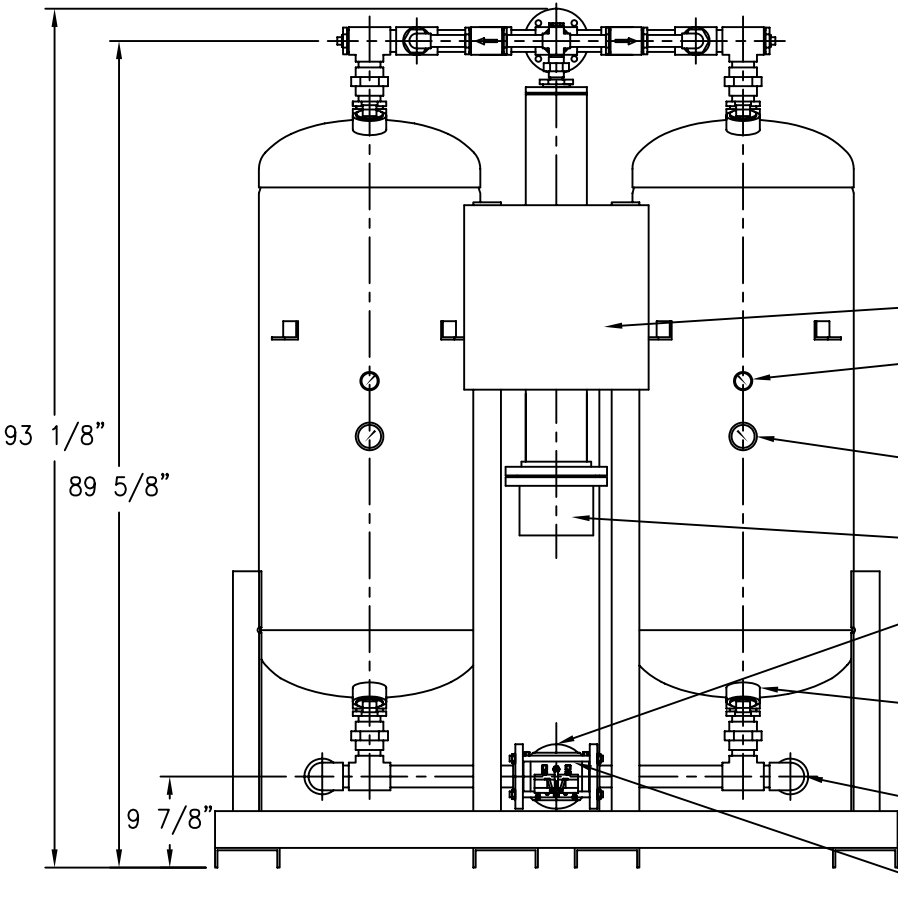
APP'L	DATE	LVL	ECN
	07-31-03	A	NO1069



LIFTING LUG
TYP 2 PER TOWER
(SHOWN IN THIS
VIEW ONLY)

4" (OUTLET)
5 1/2" (INLET)

- NOTES:**
- 1) OPERATING PRESSURE RANGE: 75-150 PSIG.
 - 2) INLET TEMPERATURE RANGE: 40°F TO 120°F.
 - 3) AMBIENT TEMPERATURE RANGE: 40°F TO 120°F.
 - 4) RATED FLOW: 800 SCFM @ 100 PSIG, 100°F.
 - 5) VESSELS BUILT TO ASME CODE PLUS CURRENT ADDENDA.
 - 6) VESSELS STAMPED "U" SYMBOL.
 - 7) HEATER HOUSING, PIPING FROM THE VESSELS TO THE PURGE LINE BRANCH TEES, AND THE TOP THIRD OF EACH VESSEL IS INSULATED. (1-1/2" MINIMUM THICKNESS FIBERGLASS WITH ALUMINUM COVER).
 - 8) THE PURGE LINE CONTAINS A PURGE FLOW GAUGE, PURGE ORIFICE & PURGE FLOW CONTROL VALVE.
 - 9) DESICCANT: 1250 LBS ACTIVATED ALUMINA (SHIPPED SEPARATELY)
 - 10) APPROXIMATE WEIGHT OF UNIT: 1700 LBS. (WITHOUT DESICCANT)



PT #81-2145

THIS DRAWING IS THE PROPERTY OF
VAN AIR SYSTEMS

**REGEN DRYER
HP800**

AND IS SUBJECT TO RETURN UPON REQUEST. IT SHALL NOT BE COPIED OR DUPLICATED IN ANY MANNER AND SHALL NOT BE SUBMITTED TO OUTSIDE PARTIES FOR EXAMINATION WITHOUT THE CONSENT OF VAN AIR SYSTEMS. IT SHALL BE USED FOR REFERENCE TO WORK UNDER CONTRACT OR PROPOSALS SUBMITTED BY VAN AIR SYSTEMS ONLY.

DRWN BY: JMK	DATE: 06-12-98	DRWG No.	REV
CHECKED:	SCALE: NONE	SD-13599	A

APP'L: **VAN AIR SYSTEMS**
A DIVISION OF **VAN AIR INC.** LAKE CITY, PA 16423 (814)774-2631 FAX:(814)774-4065