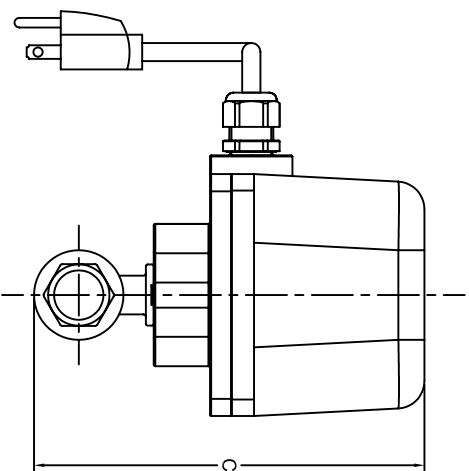
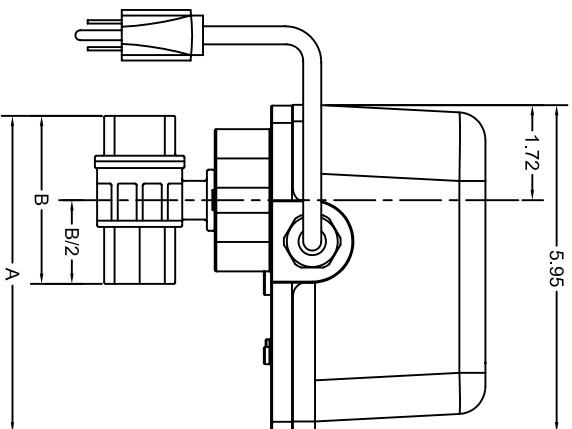


VALVE SIZE (NPT)	VALVE MATERIAL	DIMENSIONS			WEIGHT (LBS)	ACTUATOR TORQUE (IN/LBS)	FLOW COEFFICIENT CV
		A	B	C			
1/2"	BRASS	5.55	2.63	6.52	8.16	150*	19.0
3/4"		5.73	2.99	6.72	8.39	150*	34.4
1"		5.90	3.34	7.23	8.83	150*	50.2
1 1/4"		6.06	3.66	7.56	9.70	150*	103.7
1 1/2"	STAINLESS STEEL (316 SS)	6.30	4.13	8.32	10.65	150*	268.4
2"		6.63	4.80	8.91	12.96	300	309.2
2-1/2"		7.28	6.10	9.90	16.14	600	629.0
3"		7.67	6.88	10.72	21.16	600	1018.2
1/2"	BRASS	5.55	2.64	6.83	8.18	150*	19.0
3/4"		5.77	3.07	6.99	8.67	150*	34.4
1"		6.00	3.55	7.63	9.66	150*	50.2
1-1/4"		6.20	3.94	8.03	10.42	150*	103.7
1 1/2"	STAINLESS STEEL (316 SS)	6.43	4.41	8.87	11.65	150*	268.4
2"		6.89	5.32	9.61	14.88	300	309.2

* ACTUATOR TORQUE FOR THESE UNITS WITH DC VOLTAGE IS 300 IN/LBS.

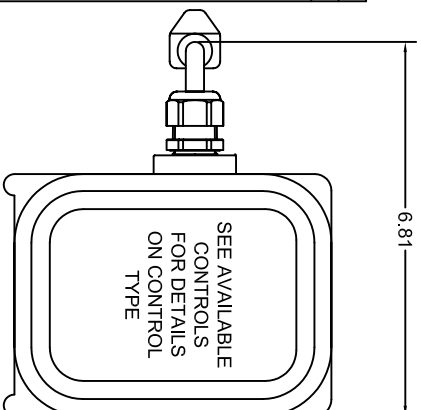
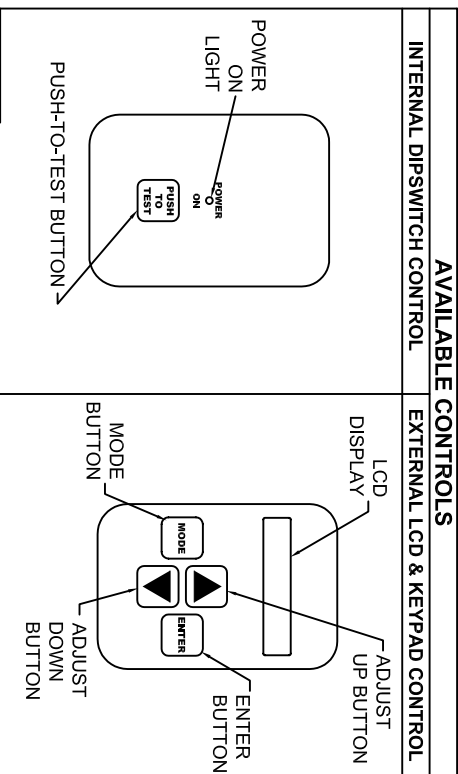


NOTES:

1. RATED PRESSURE: BRASS 600 PSIG COLD WOG, SS 900 PSIG COLD WOG
2. VALVES ARE FULL PORT 2 PIECE BALL VALVES
3. AVAILABLE ELECTRICAL: -115VAC-1PH-50/60HZ, MAX CURRENT: 1.7 AMPS
-230VAC-1PH-50/60HZ, MAX CURRENT: 0.9 AMPS
-12VDC, MAX CURRENT: 1.7 AMPS
-24VDC, MAX CURRENT: 0.9 AMPS
4. AVAILABLE CONTROLS: -EXTERNAL MEMBRANE KEYPAD WITH LCD DISPLAY, -INTERNAL DIPSWITCH CONTROLS FOR TIME CYCLE SETTING (INCLUDES EXTERNAL PUSH-TO-TEST BUTTON WITH POWER LED),
THE ABOVE MENTIONED CONTROLS WITH ALARM RELAY & CONTACTS (CONTACT RATING 10A @ 125VAC)

5. NEMA 4 ENCLOSURE
6. AMBIENT TEMPERATURE OPERATING RANGE: 10 TO 120°F (LCD VERSION)
0 TO 120°F (DIPSWITCH VERSION)
7. VALVE INTERNAL MATERIALS:
BRASS VALVES: BALL-CHROME PLATED BRASS
STEM-BRASS
SEAT-PTFE
SEAT BACKUP RING-VITON
BALL-316SS
STEM-316SS
SEATS-RPTFE
SEAT BACKUP RING-VITON

AVAILABLE CONTROLS



MOTORIZED DRAIN VALVE
MDV400

This drawing is the property of **VAN AIR SYSTEMS INC** and is subject to return upon request. It shall not be copied or duplicated in any manner and shall not be submitted to outside parties for examination without the consent of Van Air Systems Inc. It shall be used for reference to work under contract or proposals submitted by Van Air Systems Inc. only.

DRWN BY: WLN	DATE: 6/11/2001	DRWG No.	REV
CHECKED:	SCALE: NONE	SD-80047	
APPL:			