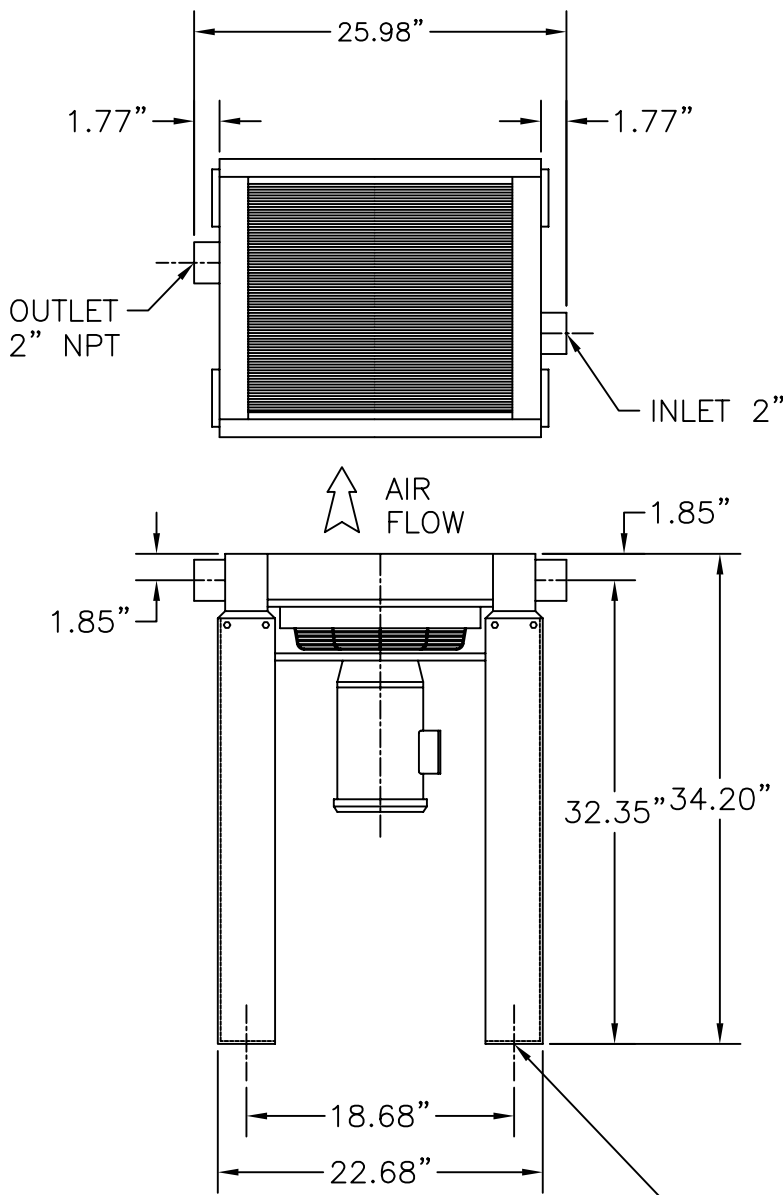
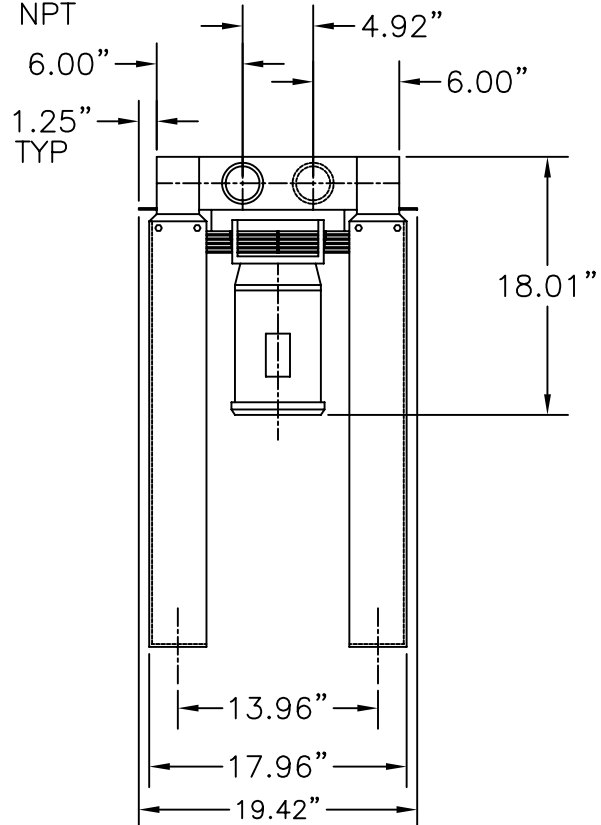


APP'L	DATE	LVL	REVISION
SCF	8-8-95	A	ECN: N0658
	3-26-96	B	ECN: 2600



NOTES

1. Maximum Working Pressure: 250 PSIG
2. Maximum Working Temperature: 350°F
3. Materials of Construction:
Core- Aluminum
Fan- Aluminum hub, Polypropylene blades
Motor- TEFC
Legs & Fan Guard- Steel with baked enamel finish
4. Unit shipped with legs not installed
5. Unit shipping weight: 120 LBS



.62" DIA MOUNTING HOLE (typ 4)

CAPACITY MAX. SCFM @ 5, 10, 15 and 20°F Approach - Based on 80 to 125 PSIG

INLET TEMP. °F	150				200				250				300				350				
	5	10	15	20	5	10	15	20	5	10	15	20	5	10	15	20	5	10	15	20	
MODEL																					
AC-140 (all voltages)	210	384	520	605	175	375	430	500	160	300	400	464	135	250	340	396	125	235	305	355	

Maximum pressure drop, less than 3 PSI.

ELECTRIC MOTOR AND FAN DATA

MODEL	PART NO	FAN CFM	MOTOR H.P.	VOLTAGE	FULL LOAD AMPS	RPM	NEMA FRAME	THERMAL OVERLOAD	WIRING DIAGRAM
AC-140-6	83-0711	2200	1.0	115/230V-1PH-60Hz	12.0/6.0	3450	56C	NONE	A-6887
AC-140-7	83-0712	1825	1.0	230V-3PH-60Hz	3.2	2850	56C	NONE	A-6888
		2200	1.0	460V-3PH-60Hz	1.6	3450	56C	NONE	

Published electrical ratings are approximate, and may vary because of motor brand. Actual ratings are on motor nameplate. Fan motors MUST NOT be cycled. Outdoor applications must be protected from direct weather. If ductwork or additional static resistance is added to the cooler airstream, an auxiliary air mover may be required.

This drawing is the property of

VAN AIR SYSTEMS INC

and is subject to return upon request. It shall not be copied or duplicated in any manner and shall not be submitted to outside parties for examination without the consent of Van Air Systems Inc. It shall be used for reference to work under contract or proposals submitted by Van Air Systems Inc. only.

AFTERCOOLER
MODELS AC-140 (ALL VOLTAGES)

DRWN BY: jAc	DATE: 06-06-95	DRWG No. SD-13123	REV B
CHECKED:	SCALE: ----		

APPL:

VAN AIR SYSTEMS INC

Lake City, PA 16423 (814)774-2631 Fax: 814/774-3482