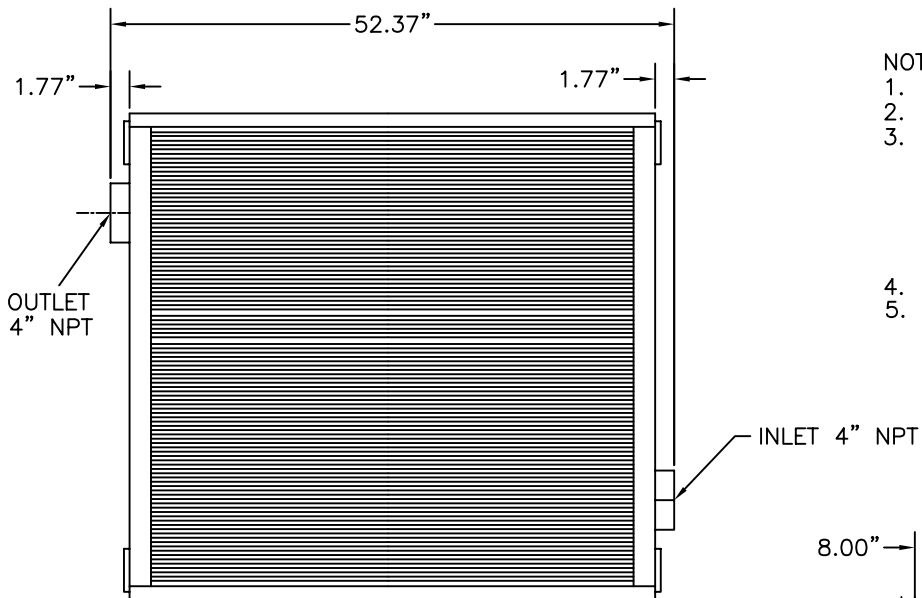
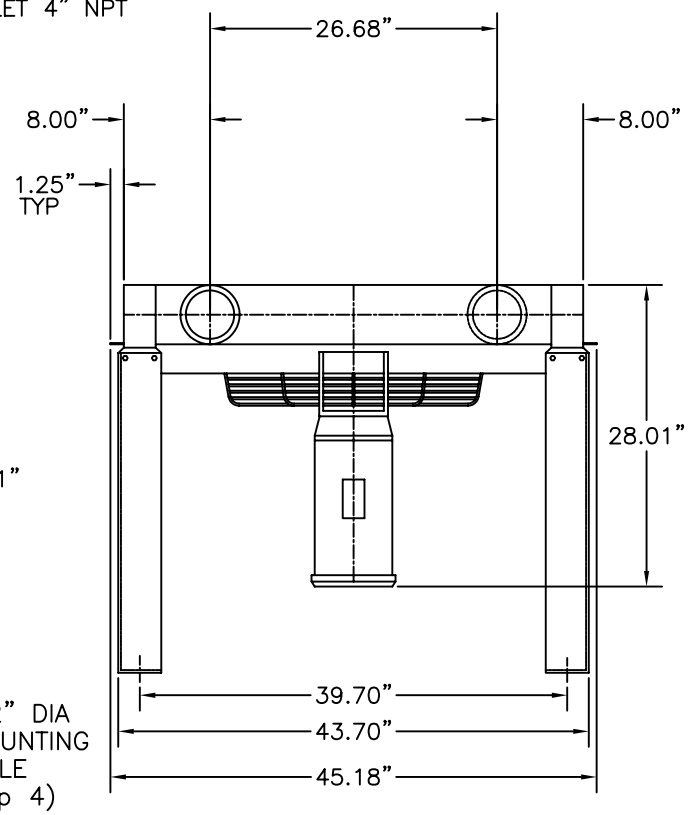
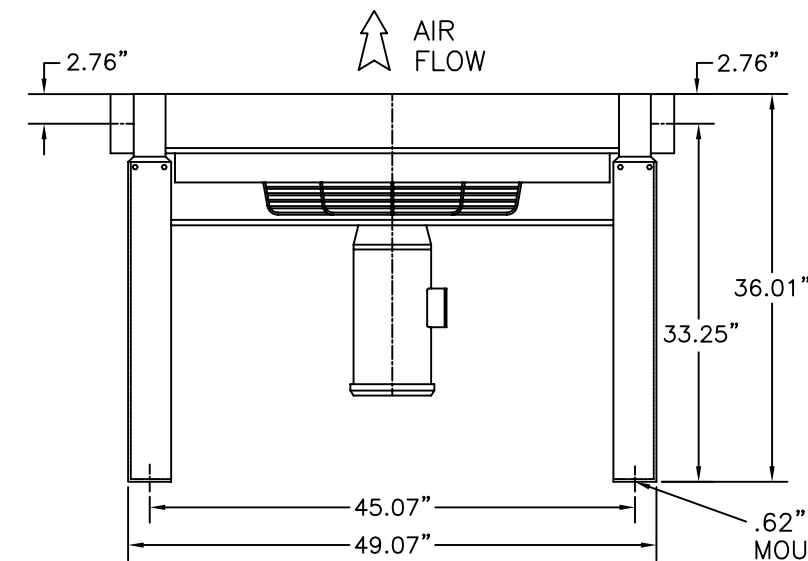


APP'L	DATE	LVL	REVISION
	8-8-95	A	ECN: N0664
	1-10-96	B	ECN: N0691



- NOTES
- Maximum Working Pressure: 250 PSIG
 - Maximum Working Temperature: 350°F
 - Materials of Construction:
 Core- Aluminum
 Fan- Aluminum hub, Polypropylene blades
 Motor- TEFC
 Legs & Fan Guard- Steel with baked enamel finish
 - Unit shipped with legs not installed
 - Unit shipping weight: 625 LBS



CAPACITY MAX. SCFM @ 5, 10, 15 and 20°F Approach - Based on 80 to 125 PSIG

INLET TEMP. °F	150				200				250				300				350				
	5	10	15	20	5	10	15	20	5	10	15	20	5	10	15	20	5	10	15	20	
MODEL																					
AC-200	1220	2220	3000	3470	1090	1980	2680	3100	1035	1880	2500	2870	784	1426	1980	2270	705	1290	1725	1980	

Maximum pressure drop, less than 3 PSI.

ELECTRIC MOTOR AND FAN DATA

MODEL	PART NO	FAN CFM	MOTOR H.P.	VOLTAGE	FULL LOAD AMPS	RPM	NEMA FRAME	THERMAL OVERLOAD	WIRING DIAGRAM
AC-200-7	83-0728	14000	7.5	230/460V-3PH-60Hz	19.6/9.8	1740	213TC	NONE	A-6888

Published electrical ratings are approximate, and may vary because of motor brand. Actual ratings are on motor nameplate. Fan motors MUST NOT be cycled. Outdoor applications must be protected from direct weather. If ductwork or additional static resistance is added to the cooler airstream, an auxiliary air mover may be required.

This drawing is the property of **VAN AIR SYSTEMS INC** and is subject to return upon request. It shall not be copied or duplicated in any manner and shall not be submitted to outside parties for examination without the consent of Van Air Systems Inc. It shall be used for reference to work under contract or proposals submitted by Van Air Systems Inc. only.

AFTERCOOLER
 MODELS AC-200 (ELECTRIC)

DRWN BY: jAc	DATE: 06-06-95	DRWG No. SD-13129	REV B
CHECKED:	SCALE: ----		

APPL: **VAN AIR SYSTEMS INC**
 Lake City, PA 16423 (814)774-2631 Fax: 814/774-3482