



APRIL 2000
P/N 432-10021

INSTALLATION, OPERATION & MAINTENANCE INSTRUCTIONS

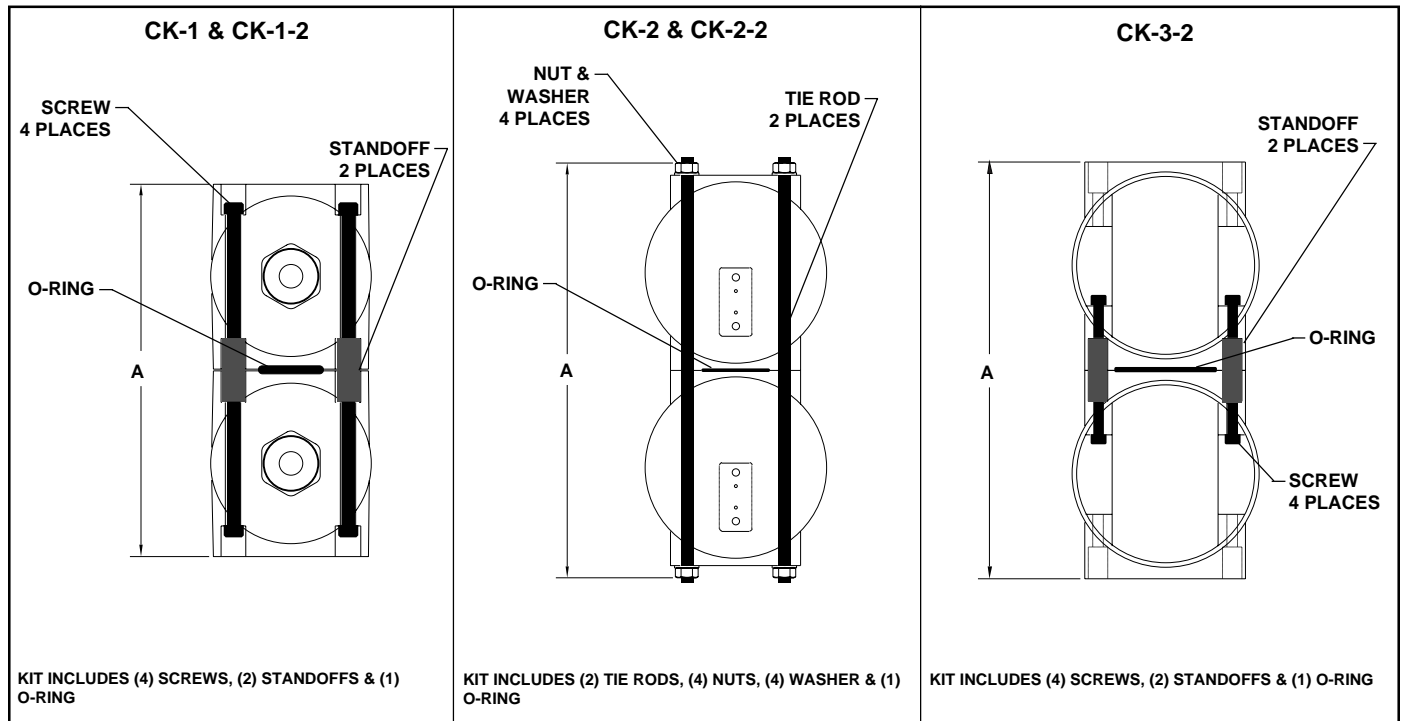
CK-1 THRU CK-3-2

CONNECTOR KITS

FOR F200 SERIES FILTER HOUSINGS

PRODUCT PURPOSE & FUNCTION:

Van Air's Connector Kits are designed to connect (2) F200 series filter housings together for dual filtration applications.



CONNECTING KIT DETAILS

TYPE	A	USED ON (F200-)	PART NO
CK-1	7	55	84-0723
CK-1-2	5-3/4	15 THRU 25	84-10133
CK-2	10-3/4	85 THRU 265	84-0724
CK-2-2	11-1/4	350 THRU 500	84-10134
CK-3-2	15-3/4	600 THRU 1000	84-10135

WARNINGS

- READ INSTRUCTIONS CAREFULLY BEFORE CONNECTOR FILTERS.
- DO NOT INSTALL CONNECTING KIT TO EQUIPMENT THAT IS UNDER PRESSURE.
- DO NOT CONNECT DIFFERENT FILTER MODELS.
- DO NOT OPERATE IF THERE IS A LEAK. TAKE FILTERS OUT OF SERVICE IMMEDIATELY.

INSTALLING CK-1 & CK-1-2

1. Remove filter heads from filter bowls.
2. Apply grease to o-ring and place it on the recess around the inlet/outlet area of one filter head.
3. Place (1) standoff in each thru-hole.
4. Place (1) screw through each thru-hole on the other side of the filter head and thread into each standoff until snug.
5. Join the other head by holding each head together with the standoffs in each thru-hole between the heads as shown in **Figure 1.** (NOTE: Be sure that the heads are connected in the correct flow direction.)
6. Place (1) screw through each thru-hole on the other side of the second filter head and thread into each standoff until snug.
7. Gradually tighten each screw down in a alternating crisscross pattern to ensure an even seal between the filter heads.
8. Follow **Installation** instructions on page 3 of the F200 Series Filter Housing instruction manual that is provided with each filter. (NOTE: Read all instructions carefully before installing filters.)

INSTALLING CK-2 & CK-2-2

1. Remove filter heads from filter bowls.
2. Place each tie rod through the thru-holes of one of the filter heads.
3. Place (1) washer on ends of the tie rods on far side of the filter head.
4. Thread (1) nut onto each tie rod over each washer.
5. Apply grease to o-ring and place it in the recess around the inlet/outlet area of one filter head.
6. Join the other head (with o-ring between them) by feeding the tie rods through each thru-hole until each filter head is together as shown in **Figure 1.** (NOTE: Be sure that the heads are connected in the correct flow direction.)
7. Place (1) screw on other end of the tie rods on outer side of the filter head.
8. Thread (1) nut onto each tie rod over each washer.
9. Gradually tighten each screw down in a alternating crisscross pattern to ensure an even seal between the filter heads.
10. Follow **Installation** instructions on page 3 of the F200 Series Filter Housing instruction manual that is provided with each filter (NOTE: Read all instructions carefully before installing filters.)

INSTALLING CK-3-2

1. Remove filter heads from filter bowls.
2. Remove each blanking plates from the filter heads.
3. Apply grease to o-ring and place it in the recess around the inlet/outlet area of one filter head.
4. Place (1) standoff in each thru-hole.
5. Place (1) screw through each thru-hole inside the filter head and thread into each standoff until snug.
6. Join the other head by holding each head together with the standoffs in each thru-hole between the filter heads as shown in **Figure 1.** (NOTE: Be sure that the heads are connected in the correct flow direction.)
7. Place (1) screw through each thru-hole inside the second filter head and thread into each standoff until snug.
8. Gradually tighten each screw down in a alternating crisscross pattern to ensure an even seal between the filter heads.
9. Follow **Installation** instructions on page 3 of the F200 Series Filter Housing instruction manual that is provided with each filter (NOTE: Read all instructions carefully before installing filters.)

FIGURE 1A CK-1 & CK-1-2 DETAILS

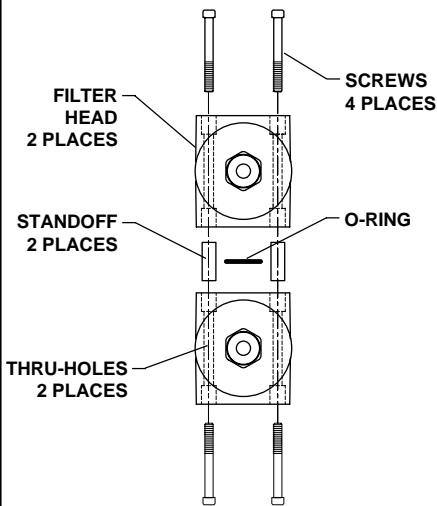


FIGURE 1B CK-2 & CK-2-2 DETAILS

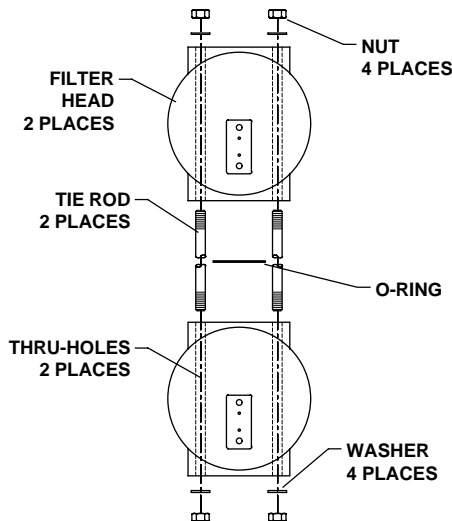
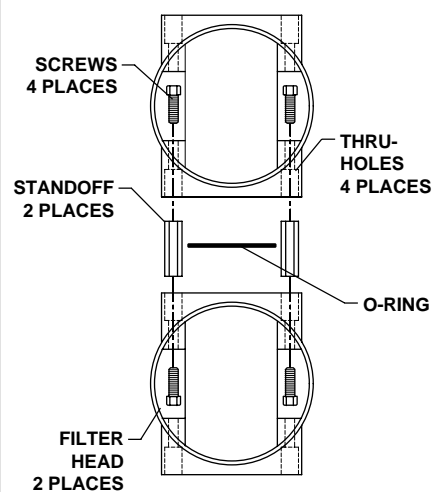


FIGURE 1C CK-3-2 DETAILS



VAN AIR SYSTEMS INC
 MAKING COMPRESSED AIR AND GAS WORK BETTER SINCE 1944.

2950 Mechanic Street
 Lake City, PA 16423-2095
 Phone: 814/774-2631
 Fax: 814/774-3482