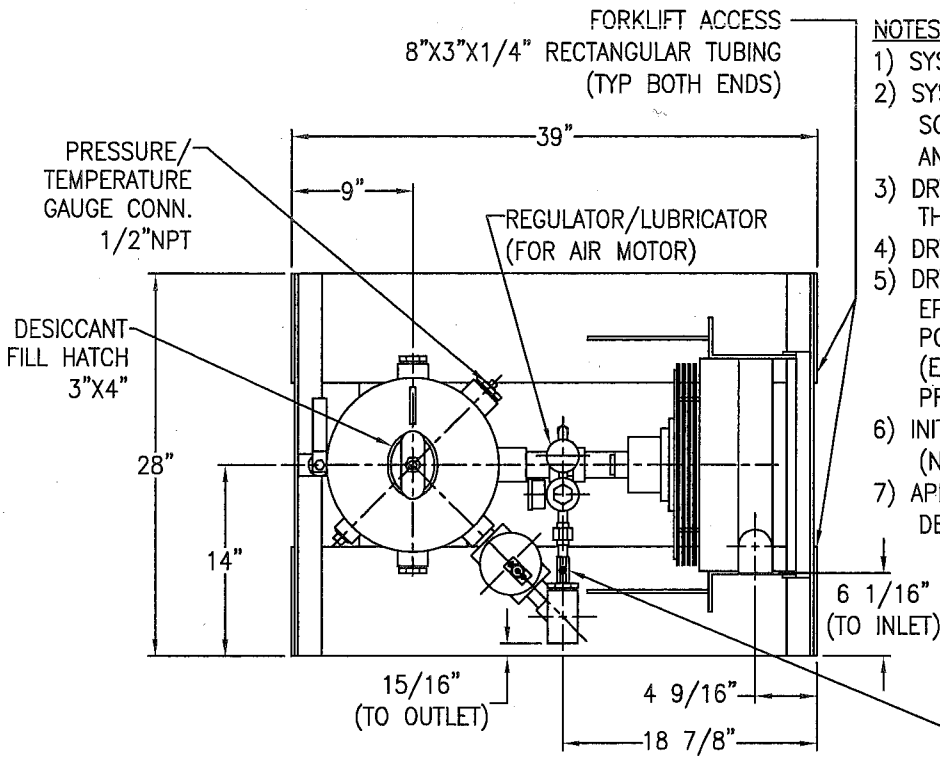
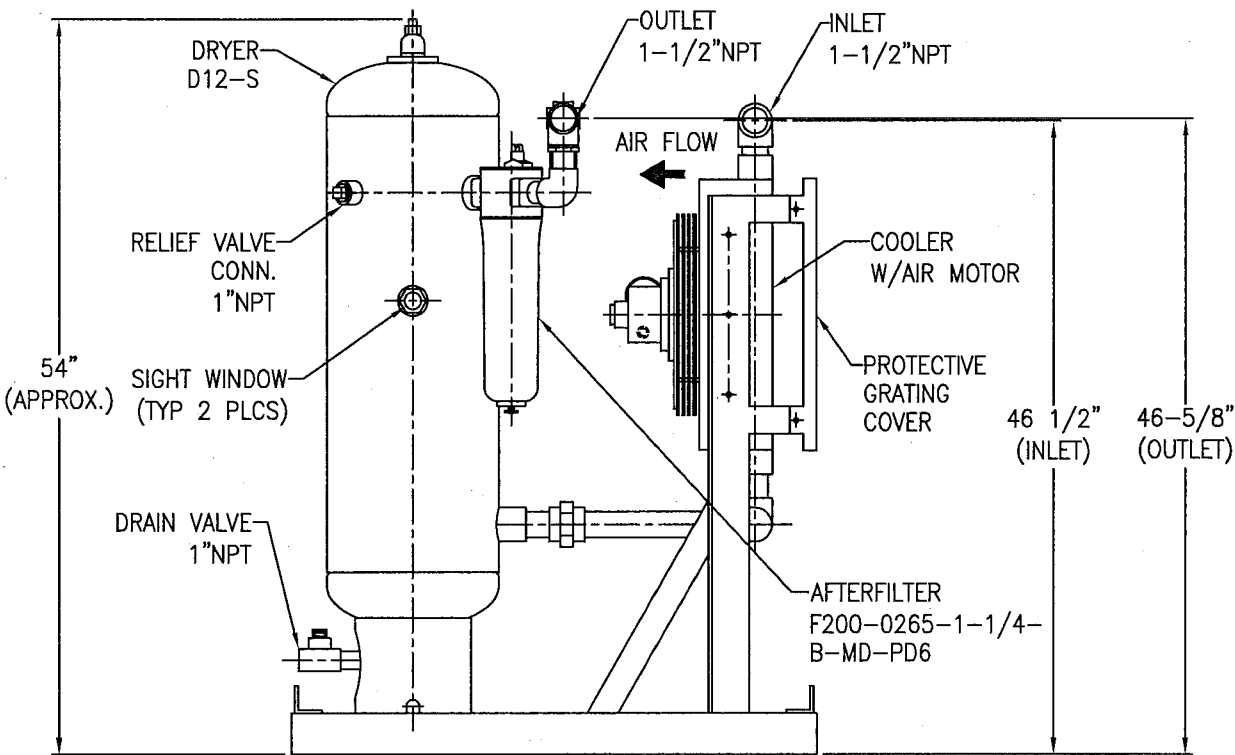


APP'L	DATE	LVL	ECN
<i>DK</i>	11-15-16	A	N01575



NOTES:

- 1) SYSTEM MAXIMUM WORKING PRESSURE: 250 PSIG.
- 2) SYSTEM INLET RATING: 150 SCFM @ 100 PSIG (185 SCFM @ 125 PSIG), 150°F (SIZED FOR 90°F AMBIENT AND A 15°F APPROACH).
- 3) DRYER VESSEL BUILT TO THE CURRENT EDITION OF THE ASME CODE SECTION VIII, DIV 1.
- 4) DRYER VESSEL IS STAMPED "UM" DESIGNATOR.
- 5) DRYER VESSEL INTERIOR IS COATED WITH AN EPOXY PRIMER AND FINISHED WITH A POLYURETHANE GLOSS. SYSTEM EXTERIOR (EXCLUDING COOLER CORE) IS COATED WITH ALKYD PRIMER AND WHITE ENAMEL FINISH COAT.
- 6) INITIAL FILL OF DESICCANT (DRY-O-LITE): 150 LBS (NOT SUPPLIED).
- 7) APPROXIMATE WEIGHT OF UNIT: 360 LBS (WITHOUT DESICCANT).



THIS DRAWING IS THE PROPERTY OF

VAN AIR INC.

AND IS SUBJECT TO RETURN UPON REQUEST. IT SHALL NOT BE COPIED OR DUPLICATED IN ANY MANNER AND SHALL NOT BE SUBMITTED TO OUTSIDE PARTIES FOR EXAMINATION WITHOUT THE CONSENT OF VAN AIR INC. IT SHALL BE USED FOR REFERENCE TO WORK UNDER CONTRACT OR PROPOSALS SUBMITTED BY VAN AIR INC. ONLY.

DRY PAK PRO

DPP-150

PT#80-1572

DRWN BY: <i>JPK</i>	DATE: 05-20-16	DRWG No. SD-14785	REV A
CHECKED: DK	SCALE: NONE		

APP'L: DK **VAN AIR SYSTEMS**