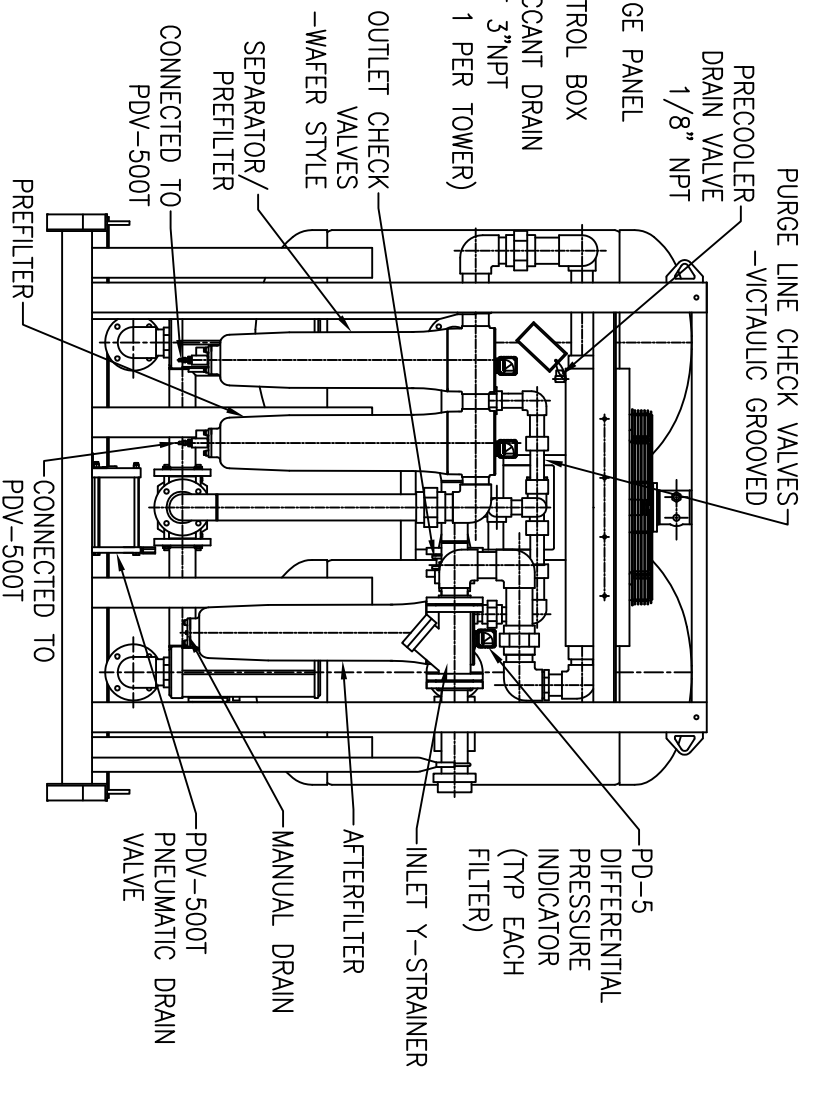
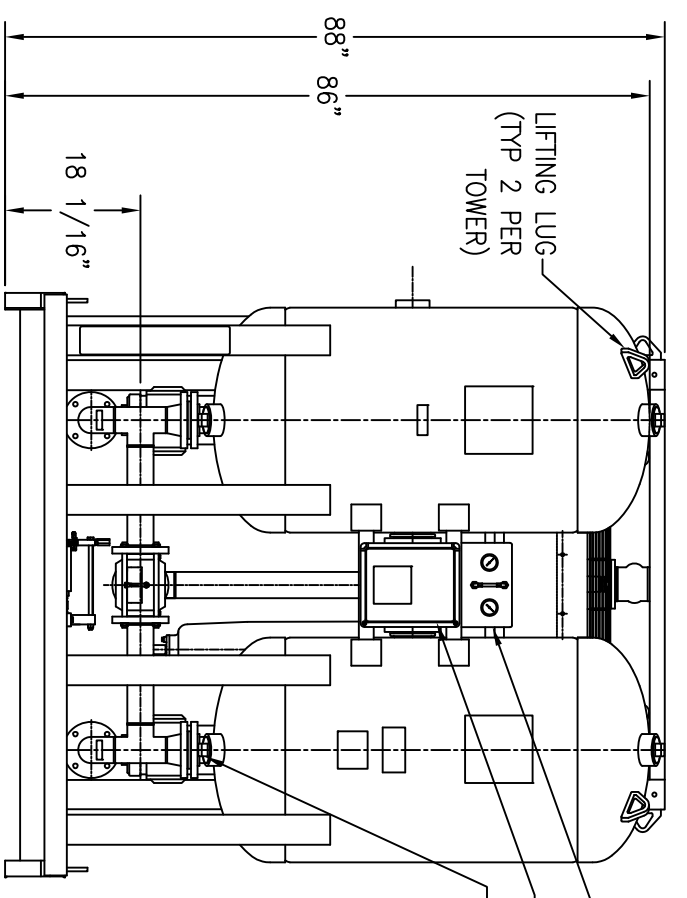
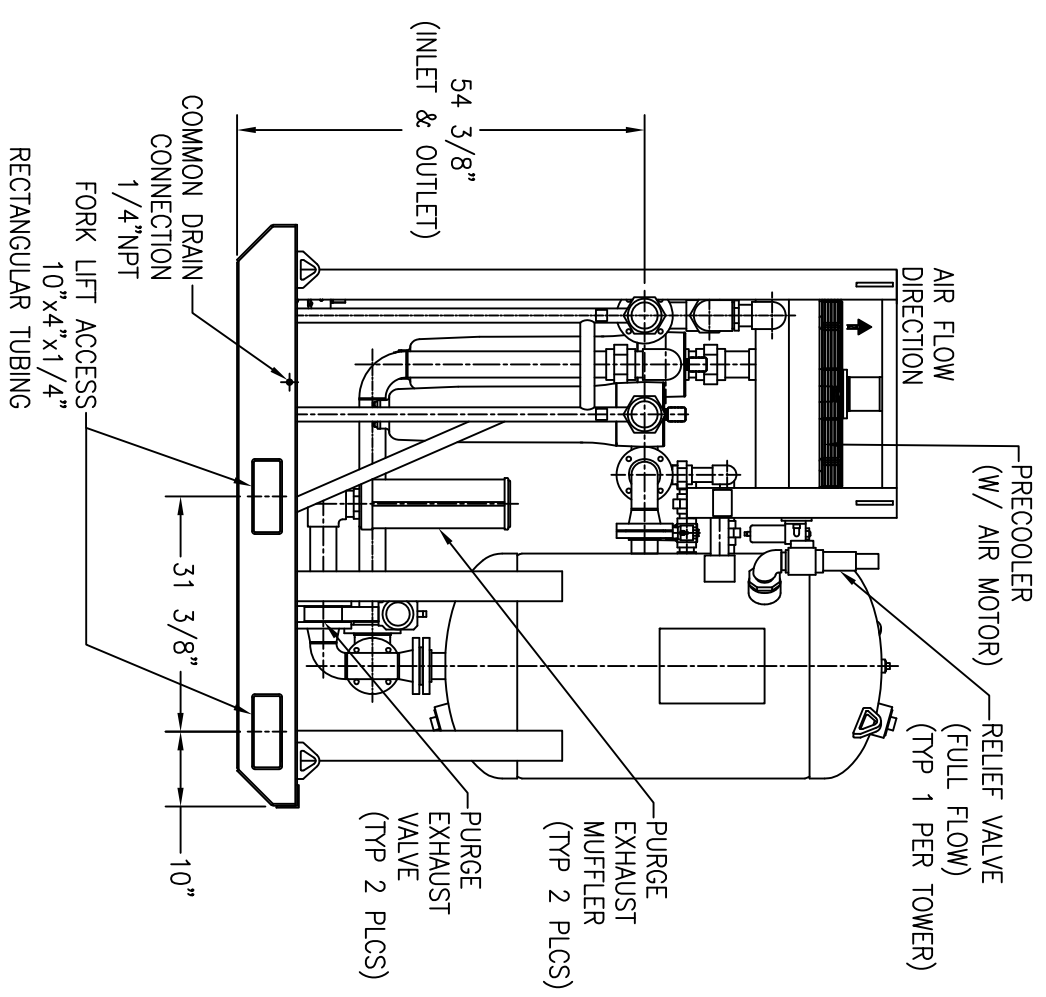
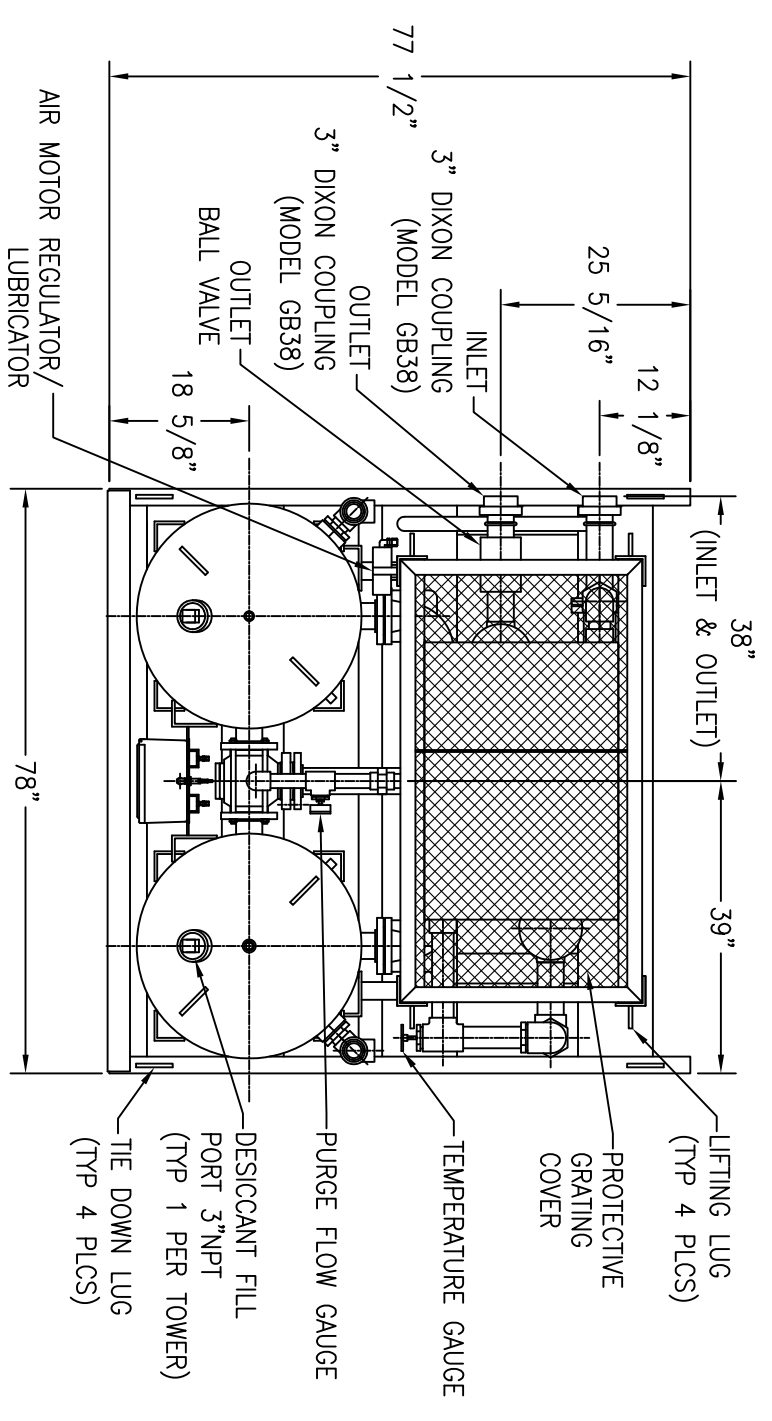


APP'L	DATE	LVL	ECN
DK	09-13-12	A	N01452
DK	04-03-13	B	N01482
DK	07-22-13	C	N01498
DK	10-18-13	D	N01509
	09-10-14	E	N01527

- NOTES:
- 1) SYSTEM MAXIMUM WORKING PRESSURE: 175 PSIG.
  - 2) SYSTEM INLET RATING: 1600 SCFM @ 100 PSIG, 150°F (PRECOOLER SIZED FOR 15°F APPROACH).
  - 3) DRYER VESSELS BUILT TO CURRENT EDITION OF THE ASME CODE SECTION VIII, DIV 1.
  - 4) DRYER VESSELS ARE STAMPED "U" DESIGNATOR.
  - 5) EXTERIOR PAINT (EXCLUDING PRECOOLER): EPOXY PRIMER AND POLYURETHANE (BLUE) FINISH.
  - 6) CONTROL AIR LINE CONTAINS A CONTROL AIR FILTER AND A CONTROL REGULATOR (NOT SHOWN).
  - 7) AIR MOTOR EXHAUSTS TO A OIL MUFFLER MOUNTED TO THE PRECOOLER SUPPORT WITH NYLON TUBING.
  - 8) FLANGE BOLT HOLES STRADDLE CENTERLINES.
  - 9) DESICCANT (1/8" BEAD ACTIVATED ALUMINA): 1820 LBS (910 LBS PER TOWER INSTALLED).
  - 10) APPROXIMATE WEIGHT OF UNIT: 3575 LBS (WITHOUT DESICCANT).



THIS DRAWING IS THE PROPERTY OF

**VAN AIR SYSTEMS**

AND IS SUBJECT TO RETURN UPON REQUEST. IT SHALL NOT BE COPIED OR DUPLICATED IN ANY MANNER AND SHALL NOT BE SUBMITTED TO OUTSIDE PARTIES FOR EXAMINATION WITHOUT THE CONSENT OF VAN AIR SYSTEMS. IT SHALL BE USED FOR REFERENCE TO WORK UNDER CONTRACT OR PROPOSALS SUBMITTED BY VAN AIR SYSTEMS ONLY.

**PREP 40 PORTABLE DRYER SYSTEM**

FR-1600 PT #81-2444

DRWN BY: MGB	DATE: 08-06-10	DRWG No.	SD-14548	REV
CHECKED: DK	SCALE: NONE			E
APP'L: DK				

A DIVISION OF **VAN AIR SYSTEMS**  
 LAKE CITY, PA 16423 (814)774-2631 FAX:(814)774-4065