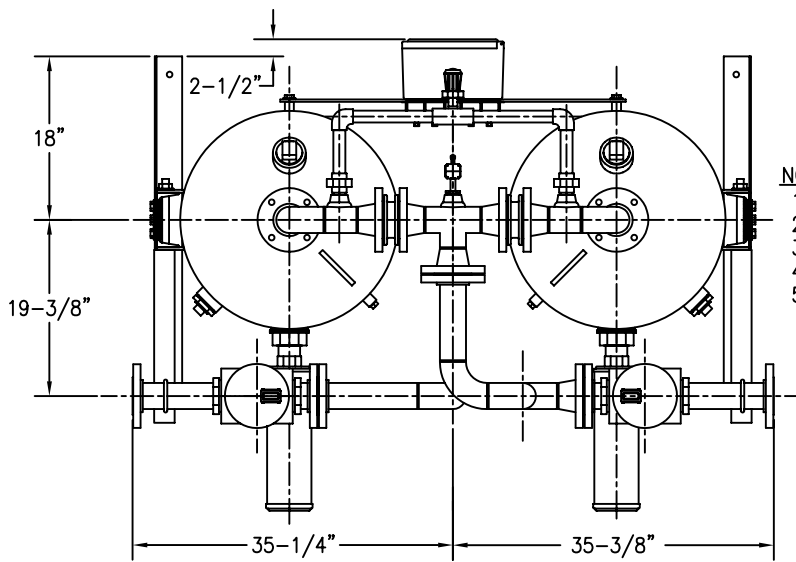
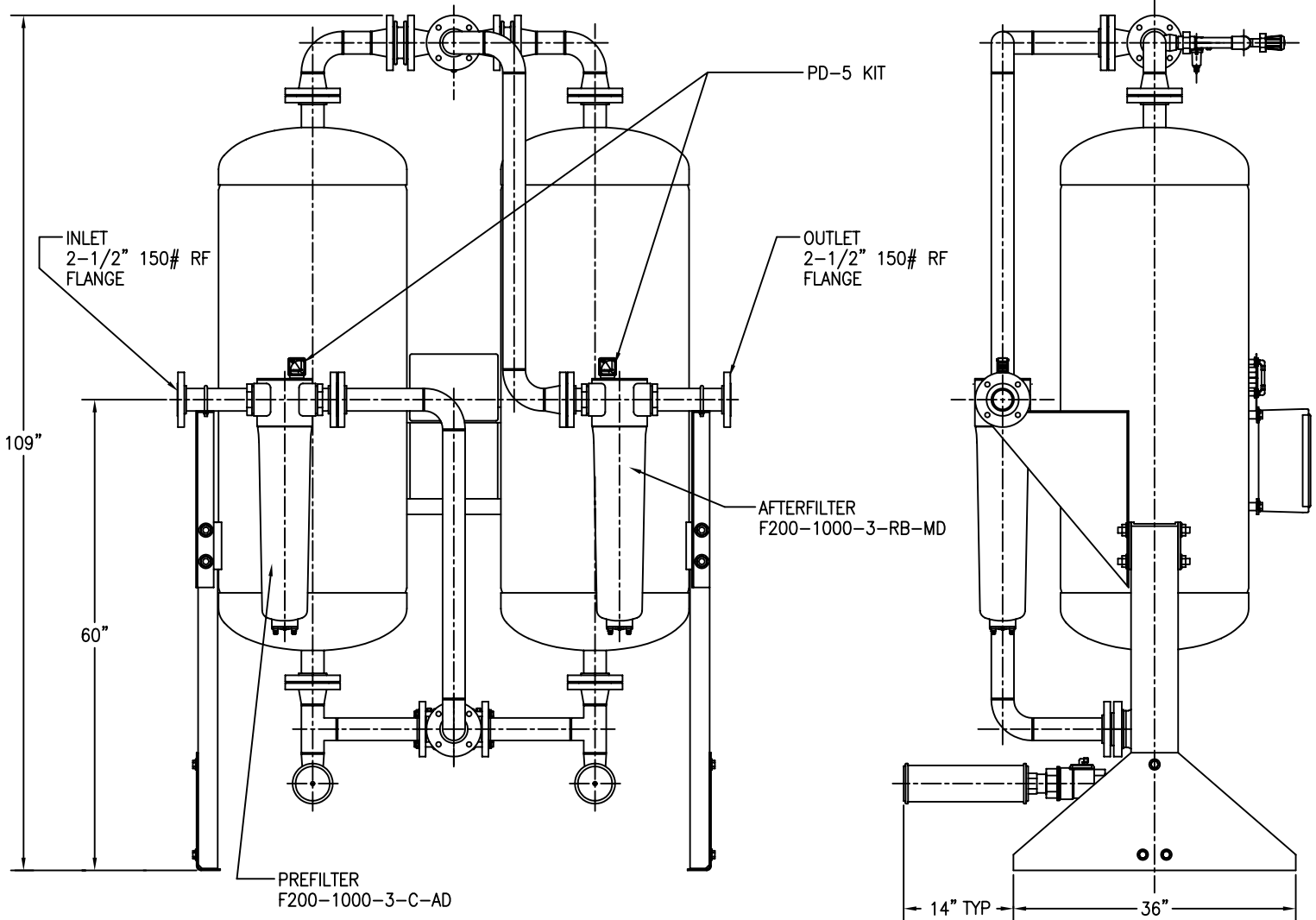


| APP'L | DATE | LVL | REVISION |
|-------|----------|-----|-----------|
| SCF | 02-01-96 | A | ECN:5451 |
| SCF | 06-28-96 | B | ECN:NO724 |
| SCF | 04-09-98 | C | ECN:NO829 |
| | 10-28-02 | D | ECN: 276 |



- NOTES:
- 1) SYSTEM AMBIENT OPERATING TEMPERATURE RANGE: 40°F TO 120°F.
 - 2) SYSTEM OPERATING PRESSURE RANGE: 60 PSIG TO 150 PSIG.
 - 3) SYSTEM INLET OPERATING TEMPERATURE RANGE: 40°F TO 120°F.
 - 4) SYSTEM RATED FLOW: 1000 SCFM @ 100 PSIG, 100°F.
 - 5) APPROXIMATE WEIGHT OF UNIT: 1790 LBS (WITHOUT DESICCANT).
: 2910 LBS (WITH DESICCANT).



This drawing is the property of
VAN AIR SYSTEMS INC

and is subject to return upon request. It shall not be copied or duplicated in any manner and shall not be submitted to outside parties for examination without the consent of Van Air Systems Inc. It shall be used for reference to work under contract or proposals submitted by Van Air Systems Inc. only.

HEATLESS REGENERATIVE DRYER HL-1000 WITH MOUNTED FILTERS

DRWN BY: JMK

DATE: 05-15-95

DRWG No.

SD-13100

REV
D

CHECKED:

SCALE: NONE

APPL:

VAN AIR SYSTEMS INC

Lake City, PA 16423 (814)774-2631 Fax: 814/774-3482 Telex: 91-4548