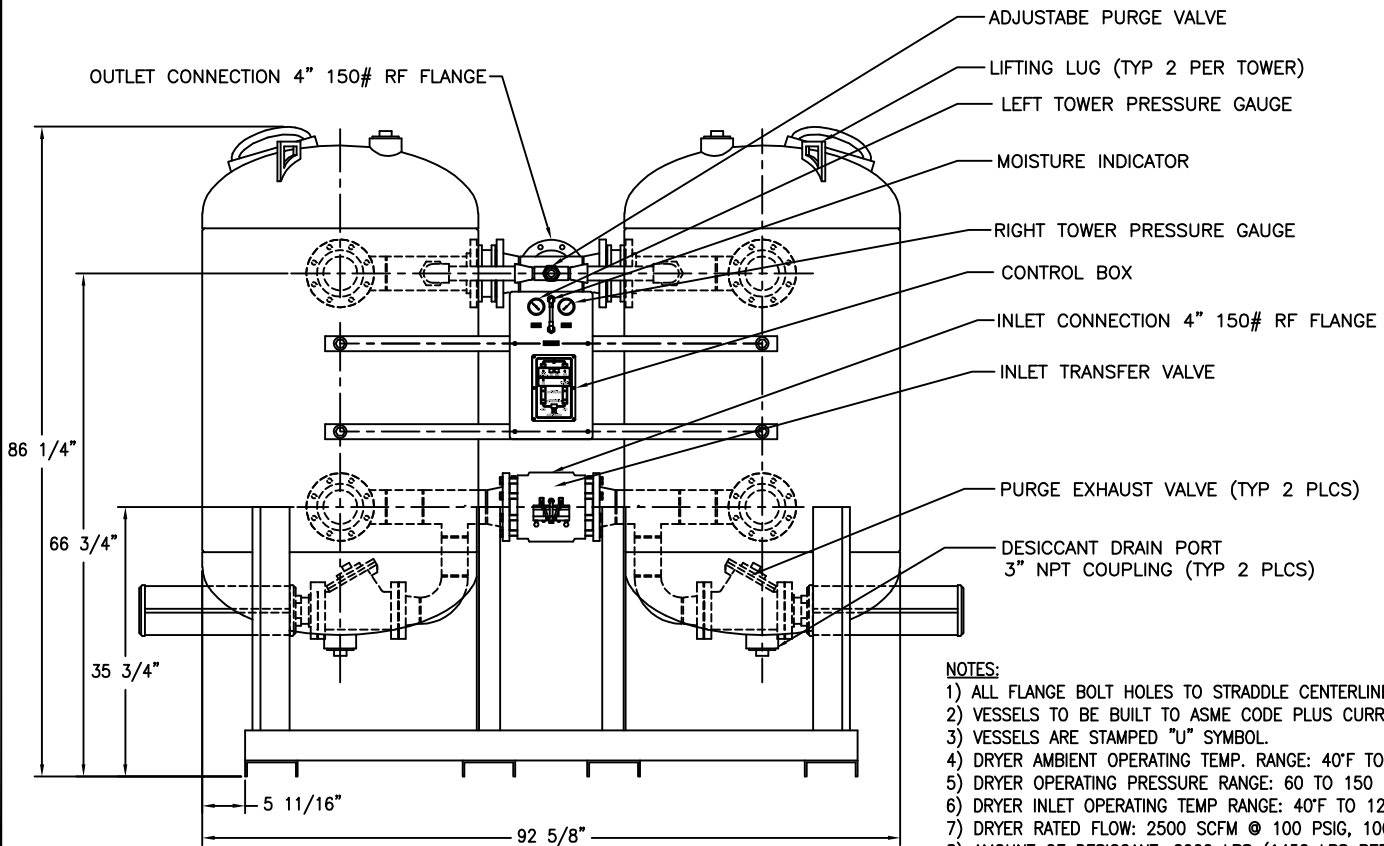
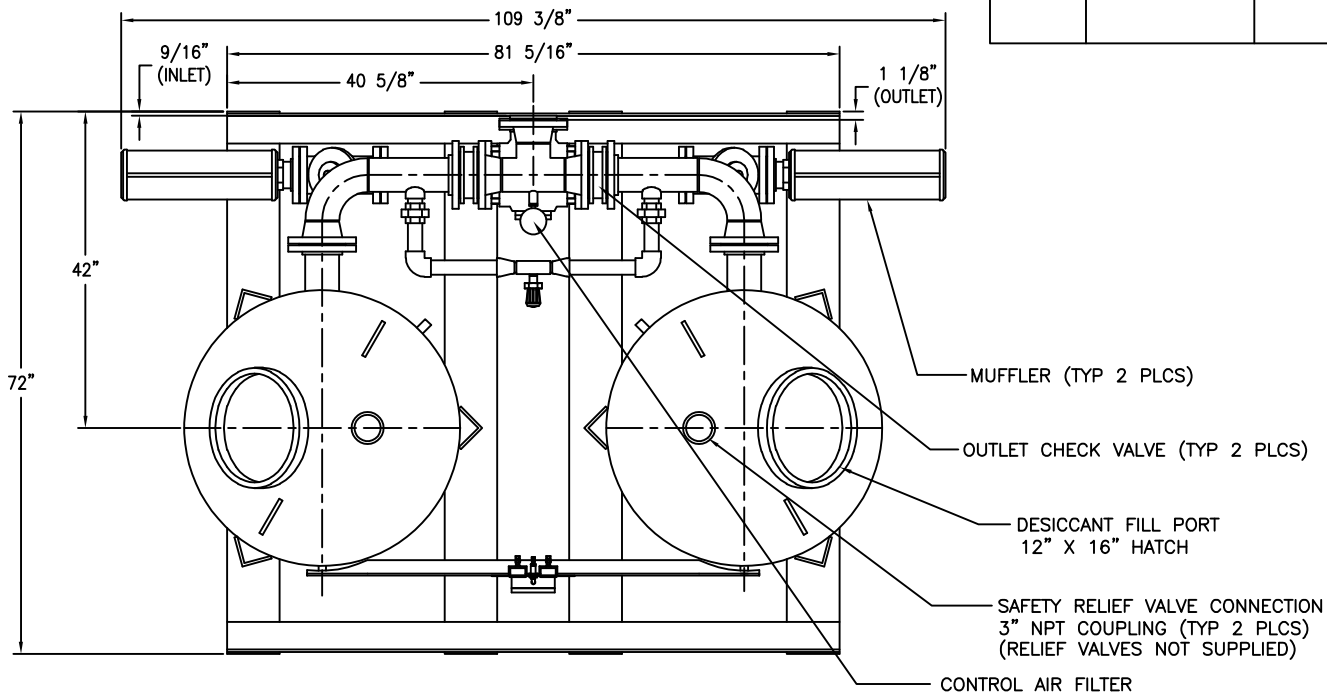


APP'L	DATE	LVL	ECN



- NOTES:**
- 1) ALL FLANGE BOLT HOLES TO STRADDLE CENTERLINES.
 - 2) VESSELS TO BE BUILT TO ASME CODE PLUS CURRENT ADDENDA.
 - 3) VESSELS ARE STAMPED "U" SYMBOL.
 - 4) DRYER AMBIENT OPERATING TEMP. RANGE: 40°F TO 120°F.
 - 5) DRYER OPERATING PRESSURE RANGE: 60 TO 150 PSIG.
 - 6) DRYER INLET OPERATING TEMP RANGE: 40°F TO 120°F.
 - 7) DRYER RATED FLOW: 2500 SCFM @ 100 PSIG, 100°F.
 - 8) AMOUNT OF DESICCANT: 2900 LBS (1450 LBS PER TOWER).
 - 9) APPROXIMATE WEIGHT OF DRYER: 2900 LBS W/O DESICCANT.
 - 10) ELECTRICAL REQUIREMENTS: 115V/1PH/60HZ, 0.30 AMPS.

THIS DRAWING IS THE PROPERTY OF

VAN AIR INC.

AND IS SUBJECT TO RETURN UPON REQUEST. IT SHALL NOT BE COPIED OR DUPLICATED IN ANY MANNER AND SHALL NOT BE SUBMITTED TO OUTSIDE PARTIES FOR EXAMINATION WITHOUT THE CONSENT OF VAN AIR INC. IT SHALL BE USED FOR REFERENCE TO WORK UNDER CONTRACT OR PROPOSALS SUBMITTED BY VAN AIR INC. ONLY.

HEATLESS REGENERATIVE DRYER HL-2500

DRWN BY: JMK	DATE: 01-13-05	DRWG No. SD-14132	REV
CHECKED:	SCALE: NONE		

APP'L: **VAN AIR SYSTEMS**