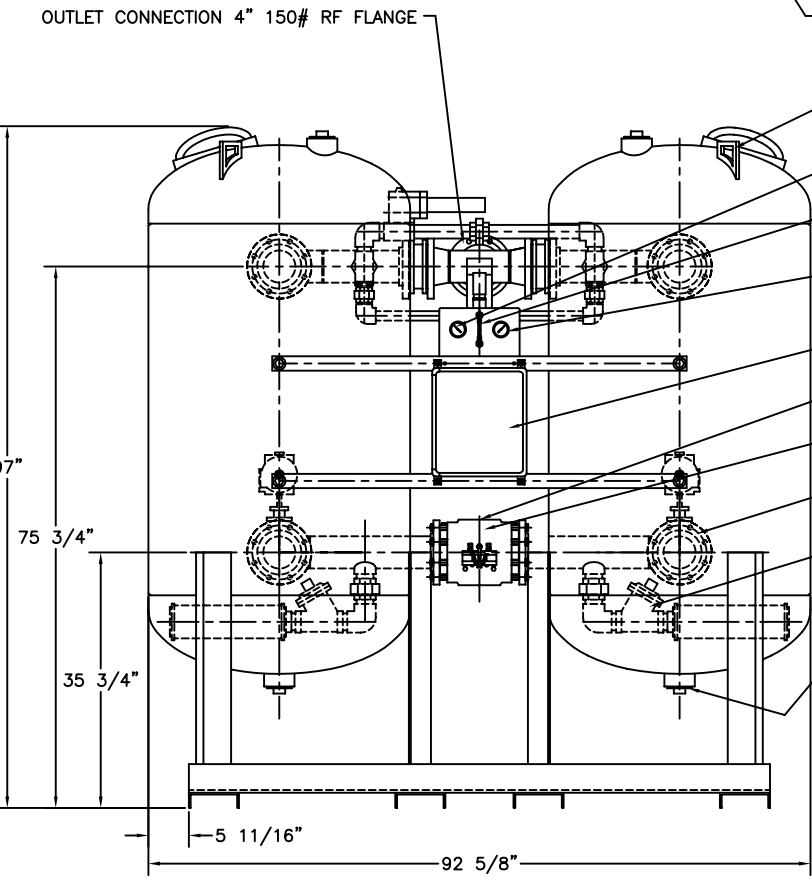


CONTROL BOX PANEL DETAIL



- MUFFLER (TYP 2 PLCS)
- OUTLET CHECK VALVE (TYP 2 PLCS)
- DESICCANT FILL PORT  
12" X 16" HATCH
- SAFETY RELIEF VALVE CONNECTION  
3" NPT COUPLING (TYP 2 PLCS)  
(RELIEF VALVES NOT SUPPLIED)
- CONTROL AIR FILTER
- LIFTING LUG (TYP 2 PER TOWER)
- LEFT TOWER PRESSURE GAUGE
- MOISTURE INDICATOR
- RIGHT TOWER PRESSURE GAUGE
- CONTROL BOX (SEE DETAIL)
- INLET CONNECTION 4" 150# RF FLANGE
- INLET TRANSFER VALVE
- PURGE EXHAUST VALVE (TYP 2 PLCS)
- DEPRESSURIZATION VALVE (TYP 2 PLCS)
- DESICCANT DRAIN PORT  
3" NPT COUPLING (TYP 2 PLCS)

- NOTES:
- 1) ALL FLANGE BOLT HOLES TO STRADDLE CENTERLINES.
  - 2) VESSELS TO BE BUILT TO ASME CODE PLUS CURRENT ADDENDA.
  - 3) VESSELS ARE STAMPED "U" SYMBOL
  - 4) DRYER AMBIENT OPERATING TEMP. RANGE: 40°F TO 120°F
  - 5) DRYER OPERATING PRESSURE RANGE: 60 TO 150 PSIG
  - 6) DRYER INLET OPERATING TEMP. RANGE: 40°F TO 120°F
  - 7) DRYER RATED FLOW: 3000 SCFM @ 100 PSIG, 100°F
  - 8) AMOUNT OF DESICCANT: 3410 LBS (1705 LBS PER TOWER)
  - 9) APPROXIMATE WEIGHT OF DRYER: 3000 LBS W/O DESICCANT
  - 10) ELECTRICAL REQUIREMENTS: 115V/1PH/60HZ, 2 AMPS

APPL	DATE	LVL	REVISION
	2-1-96	A	ECN: 5456

This drawing is the property of **VAN AIR SYSTEMS INC** and is subject to return upon request. It shall not be copied or duplicated in any manner and shall not be submitted to outside parties for examination without the consent of Van Air Systems Inc. It shall be used for reference to work under contract or proposals submitted by Van Air Systems Inc. only.

## HEATLESS REGENERATIVE DRYER HL-3000 WITH CYCLE SAVER AND FAIL TO SWITCH

DRWN BY: jAc	DATE: 11-07-94	DRWG No. SD-13034	REV A
CHECKED:	SCALE: ***		

APPL: **VAN AIR SYSTEMS INC**  
 Lake City, PA 16423 (814)774-2631 Fax: 814/774-3482 Telex: 91-4548