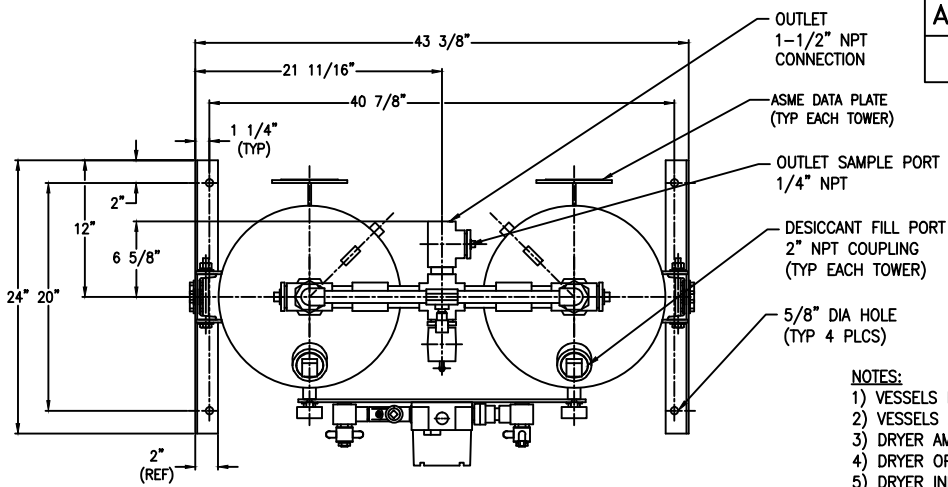
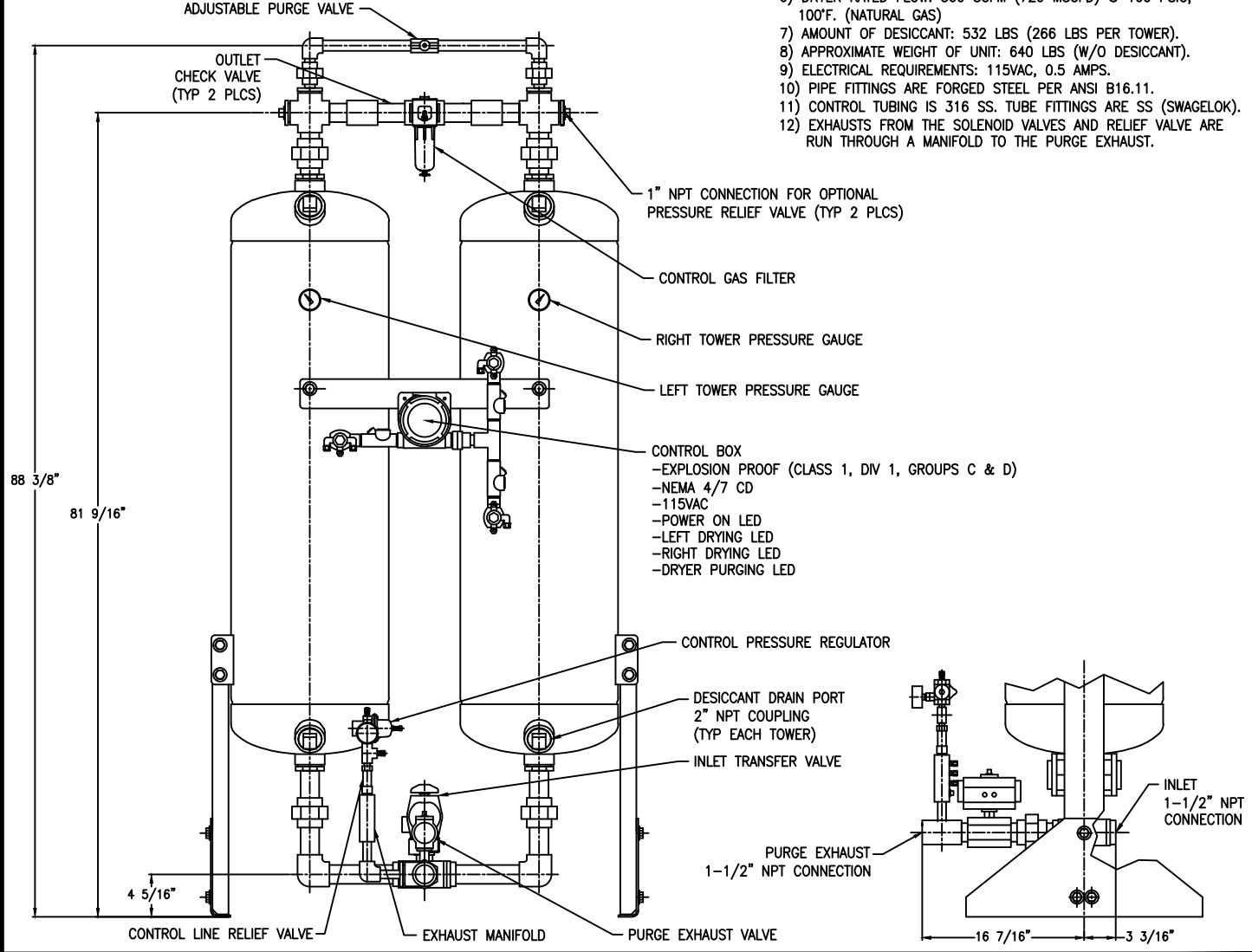


APP'L	DATE	LVL	ECN



- NOTES:**
- 1) VESSELS BUILT TO ASME CODE PLUS CURRENT ADDENDA.
 - 2) VESSELS ARE STAMPED WITH "U" DESIGNATOR.
 - 3) DRYER AMBIENT OPERATING TEMP RANGE: 40°F TO 120°F.
 - 4) DRYER OPERATING PRESSURE RANGE: 80 TO 250 PSIG.
 - 5) DRYER INLET OPERATING TEMP. RANGE: 40°F TO 120°F.
 - 6) DRYER RATED FLOW: 500 SCFM (720 MSCFD) @ 100 PSIG, 100°F. (NATURAL GAS)
 - 7) AMOUNT OF DESICCANT: 532 LBS (266 LBS PER TOWER).
 - 8) APPROXIMATE WEIGHT OF UNIT: 640 LBS (W/O DESICCANT).
 - 9) ELECTRICAL REQUIREMENTS: 115VAC, 0.5 AMPS.
 - 10) PIPE FITTINGS ARE FORGED STEEL PER ANSI B16.11.
 - 11) CONTROL TUBING IS 316 SS. TUBE FITTINGS ARE SS (SWAGelok).
 - 12) EXHAUSTS FROM THE SOLENOID VALVES AND RELIEF VALVE ARE RUN THROUGH A MANIFOLD TO THE PURGE EXHAUST.



THIS DRAWING IS THE PROPERTY OF
VAN AIR INC.

HEATLESS REGEN DRYER

HLSXG500 115V

PT #81-2535

AND IS SUBJECT TO RETURN UPON REQUEST. IT SHALL NOT BE COPIED OR DUPLICATED IN ANY MANNER AND SHALL NOT BE SUBMITTED TO OUTSIDE PARTIES FOR EXAMINATION WITHOUT THE CONSENT OF VAN AIR INC. IT SHALL BE USED FOR REFERENCE TO WORK UNDER CONTRACT OR PROPOSALS SUBMITTED BY VAN AIR INC. ONLY.

DRWN BY: JMK	DATE: 12-17-13	DRWG No. SD-14723	REV
CHECKED:	SCALE: NONE		

APP'L: **VAN GAS TECHNOLOGIES™**