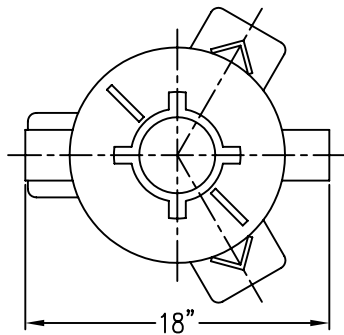
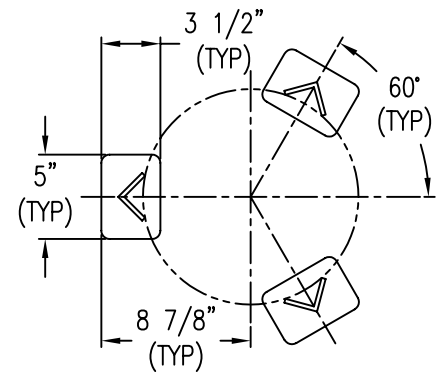
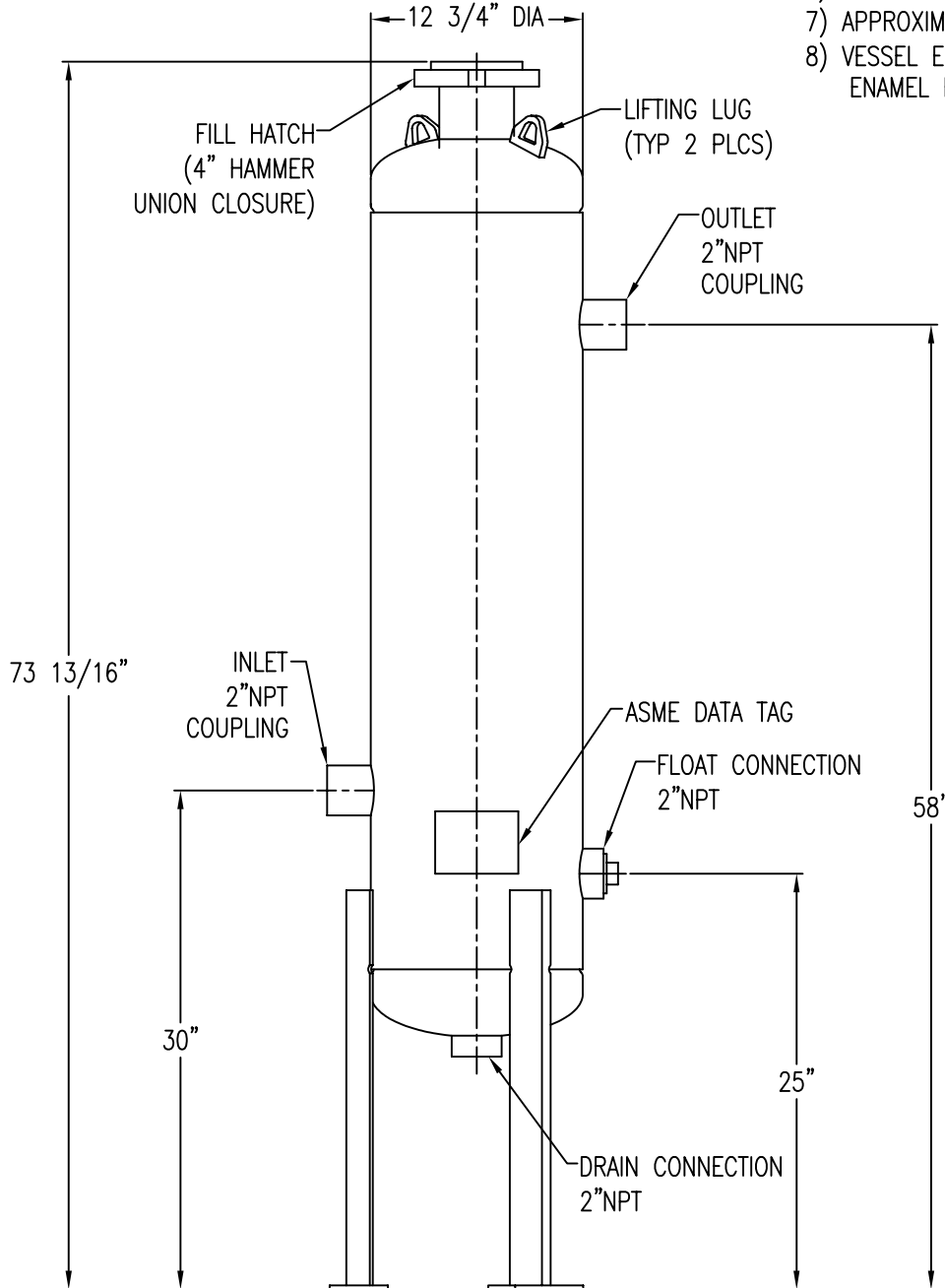


APP'L	DATE	LVL	ECN



**NOTES:**

- 1) VESSEL BUILT TO THE ASME CODE PLUS CURRENT ADDENDA.
- 2) VESSEL STAMPED WITH "UM" SYMBOL.
- 3) MAXIMUM WORKING PRESSURE: 280 PSIG.
- 4) VESSEL DESIGN TEMPERATURE: -20°F TO 120°F.
- 5) VOLUME: 3.5 CUBIC FEET.
- 6) CAPACITY: 26.2 GALLONS.
- 7) APPROXIMATE WEIGHT: 200 LBS.
- 8) VESSEL EXTERIOR COATING: ALKYD PRIMER WITH WHITE ENAMEL FINISH.



**BASE DETAIL**

PT #80-1399

THIS DRAWING IS THE PROPERTY OF

**VAN AIR INC.**

AND IS SUBJECT TO RETURN UPON REQUEST. IT SHALL NOT BE COPIED OR DUPLICATED IN ANY MANNER AND SHALL NOT BE SUBMITTED TO OUTSIDE PARTIES FOR EXAMINATION WITHOUT THE CONSENT OF VAN AIR INC. IT SHALL BE USED FOR REFERENCE TO WORK UNDER CONTRACT OR PROPOSALS SUBMITTED BY VAN AIR INC. ONLY.

**GAS DRYER**

**PLD12-2.8-S (SHORT STYLE)**

DRWN BY: SCF	DATE: 04-02-04	DRWG No.	REV
CHECKED:	SCALE: NONE	SD-14075	
APP'L:			

**VAN GAS TECHNOLOGIES™**

A DIVISION OF **VAN AIR INC.** LAKE CITY, PA 16423 (814)774-2631 FAX:(814)774-4065