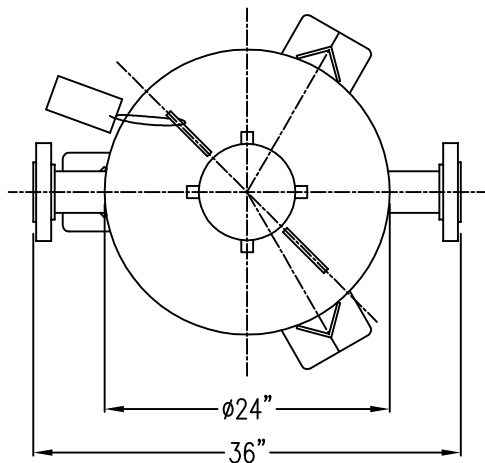
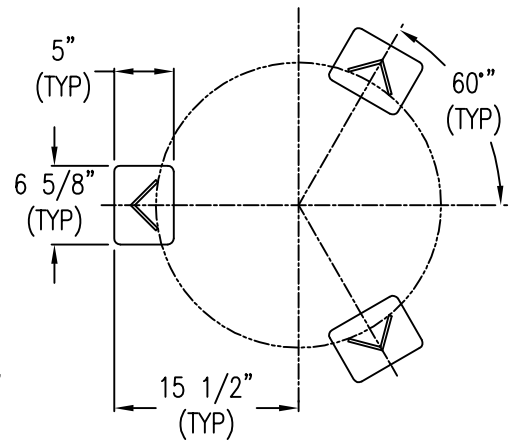
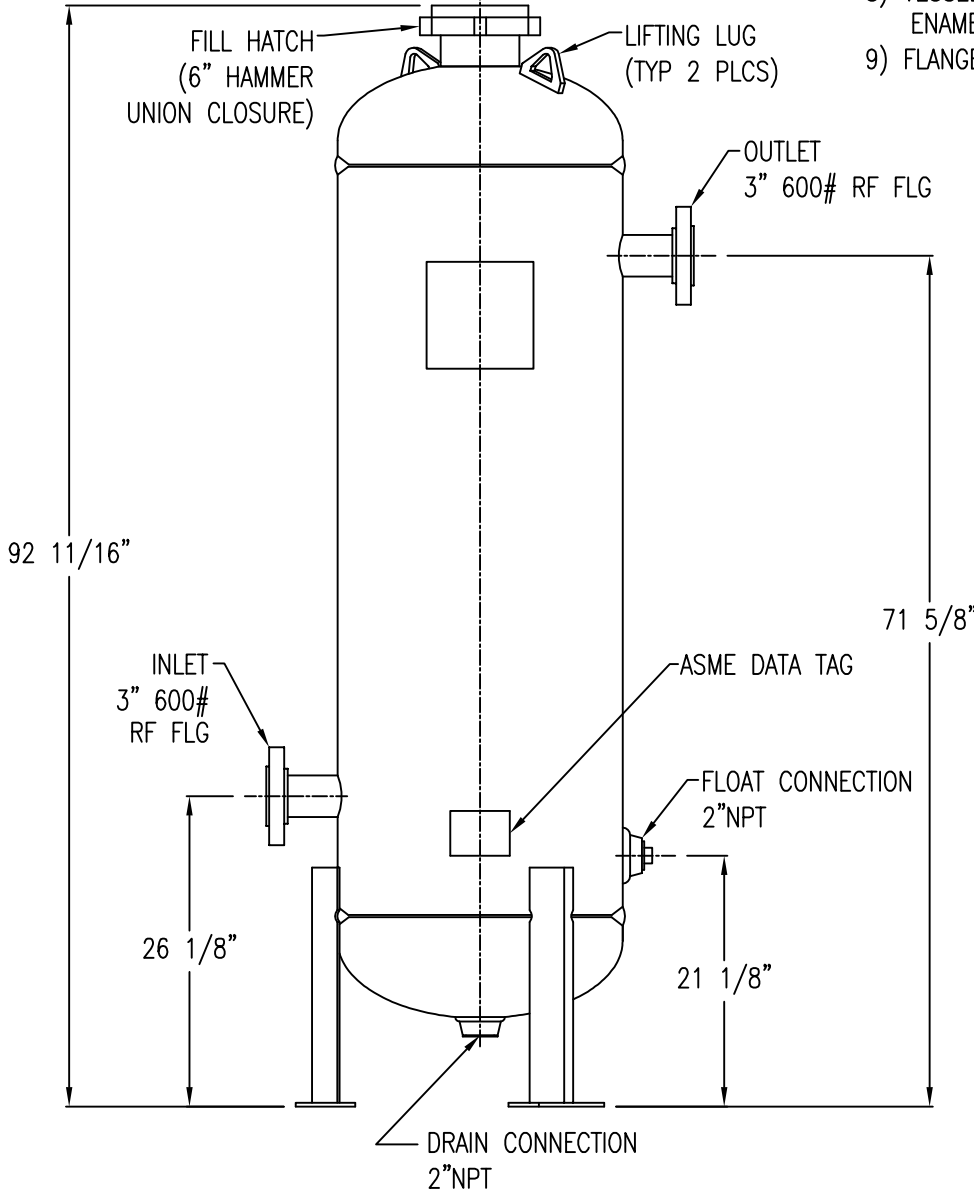


APP'L	DATE	LVL	ECN



NOTES:

- 1) VESSEL BUILT TO THE ASME CODE PLUS CURRENT ADDENDA.
- 2) VESSEL STAMPED WITH "U" SYMBOL.
- 3) MAXIMUM WORKING PRESSURE: 1450 PSIG.
- 4) VESSEL DESIGN TEMPERATURE: -20°F TO 120°F.
- 5) VOLUME: 16.5 CUBIC FEET.
- 6) CAPACITY: 123.6 GALLONS.
- 7) APPROXIMATE WEIGHT: 1870 LBS.
- 8) VESSEL EXTERIOR COATING: ALKYD PRIMER WITH WHITE ENAMEL FINISH.
- 9) FLANGE BOLT HOLES STRADDLE CENTERLINES.



BASE DETAIL

PT# 80-1484

THIS DRAWING IS THE PROPERTY OF

VAN AIR INC.

AND IS SUBJECT TO RETURN UPON REQUEST. IT SHALL NOT BE COPIED OR DUPLICATED IN ANY MANNER AND SHALL NOT BE SUBMITTED TO OUTSIDE PARTIES FOR EXAMINATION WITHOUT THE CONSENT OF VAN AIR INC. IT SHALL BE USED FOR REFERENCE TO WORK UNDER CONTRACT OR PROPOSALS SUBMITTED BY VAN AIR INC. ONLY.

**GAS DRYER
PLD24-14.5**

DRWN BY: JJK	DATE: 06-08-09	DRWG No.	SD-14435	REV
CHECKED:	SCALE: NONE			
APP'L:	VAN GAS TECHNOLOGIES™			