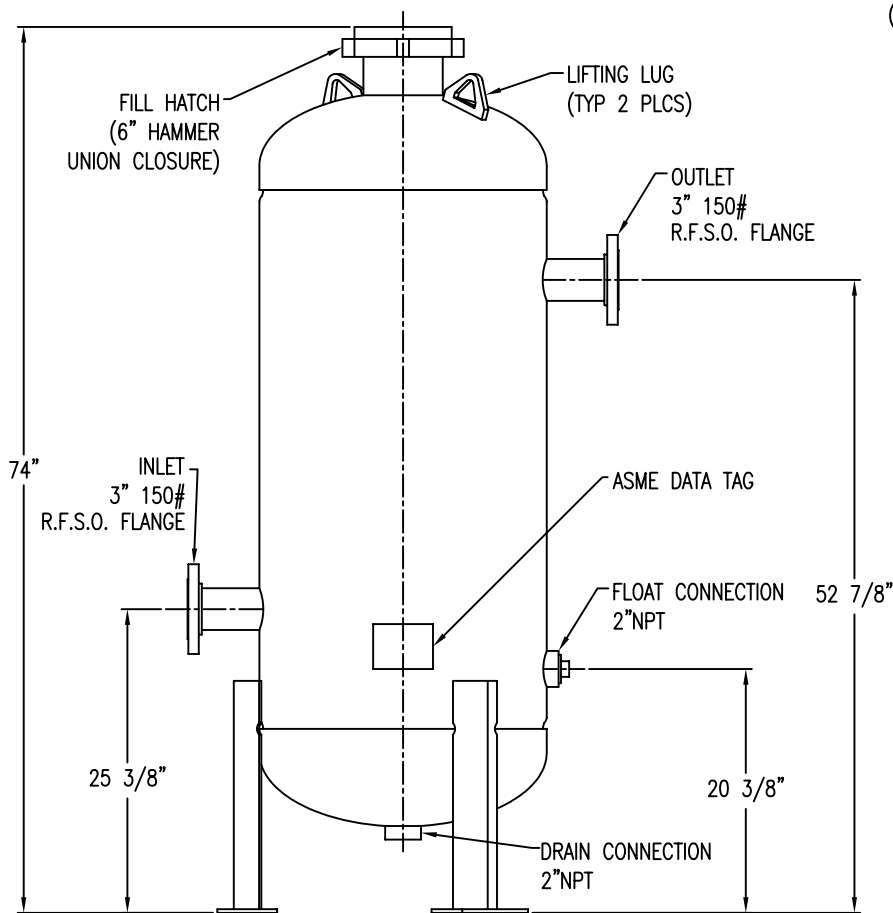
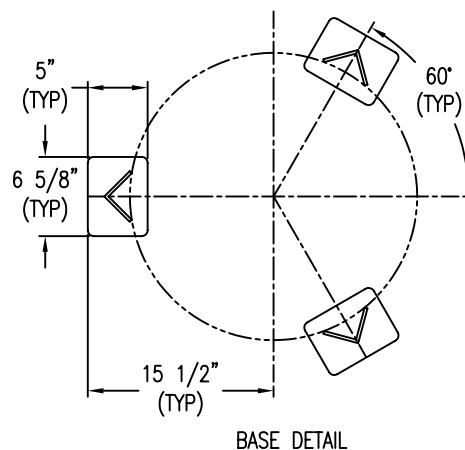
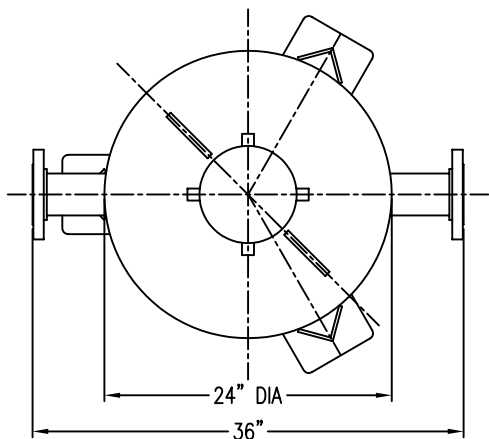


APP'L	DATE	LVL	ECN

NOTES:

- 1) VESSEL BUILT TO THE ASME CODE PLUS CURRENT ADDENDA.
- 2) VESSEL STAMPED WITH "U" SYMBOL.
- 3) MAXIMUM WORKING PRESSURE: 280 PSIG.
- 4) VESSEL DESIGN TEMPERATURE: -20°F TO 120°F.
- 5) VOLUME: 14.0 CUBIC FEET.
- 6) CAPACITY: 104.7 GALLONS.
- 7) APPROXIMATE WEIGHT: 650 LBS.
- 8) VESSEL EXTERIOR COATING: ALKYD PRIMER WITH WHITE ENAMEL FINISH.
- 9) FLANGE BOLT HOLES STRADDLE CENTERLINES.



PT #80-1405

THIS DRAWING IS THE PROPERTY OF

VAN AIR INC.

AND IS SUBJECT TO RETURN UPON REQUEST. IT SHALL NOT BE COPIED OR DUPLICATED IN ANY MANNER AND SHALL NOT BE SUBMITTED TO OUTSIDE PARTIES FOR EXAMINATION WITHOUT THE CONSENT OF VAN AIR INC. IT SHALL BE USED FOR REFERENCE TO WORK UNDER CONTRACT OR PROPOSALS SUBMITTED BY VAN AIR INC. ONLY.

GAS DRYER

PLD24-2.8 (SHORT STYLE)

DRWN BY: JMY	DATE: 05/01/08	DRWG No.	REV
CHECKED:	SCALE: NONE	SD-14081	
APP'L:	VAN GAS TECHNOLOGIES™		