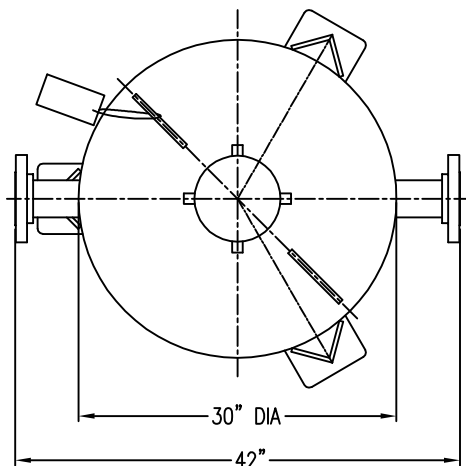
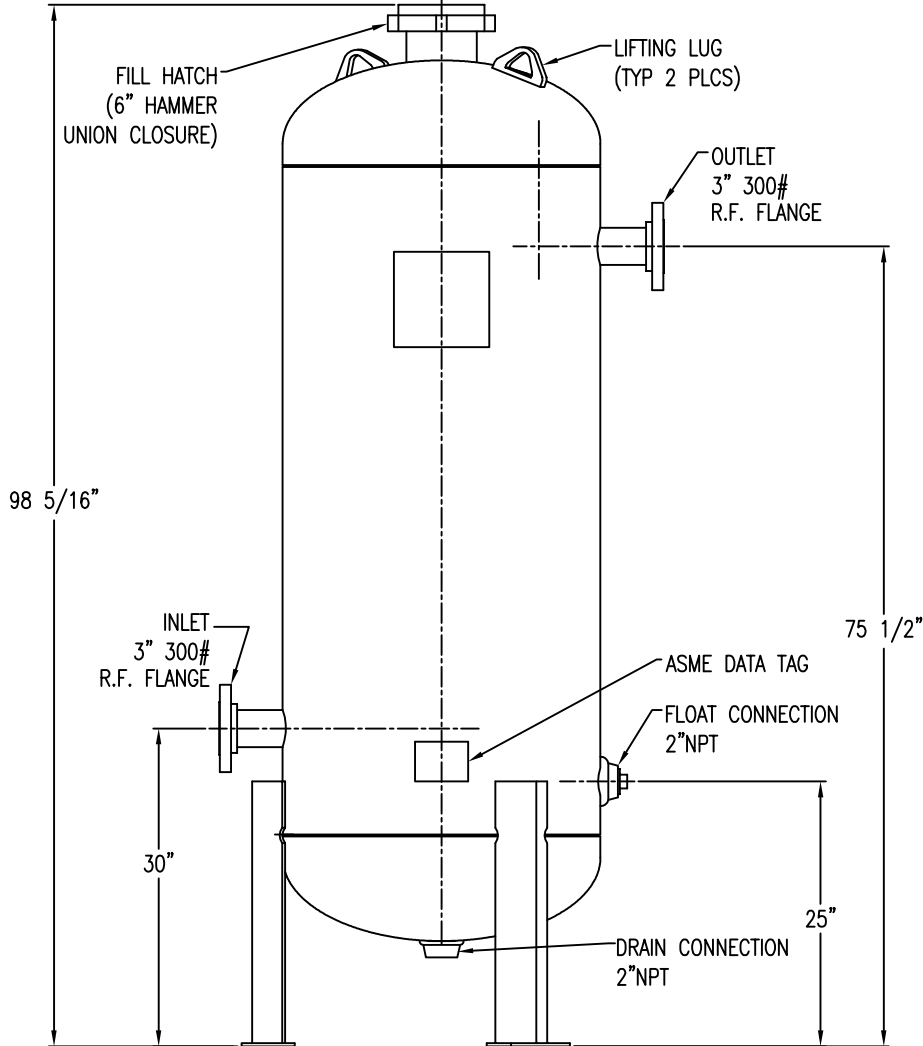
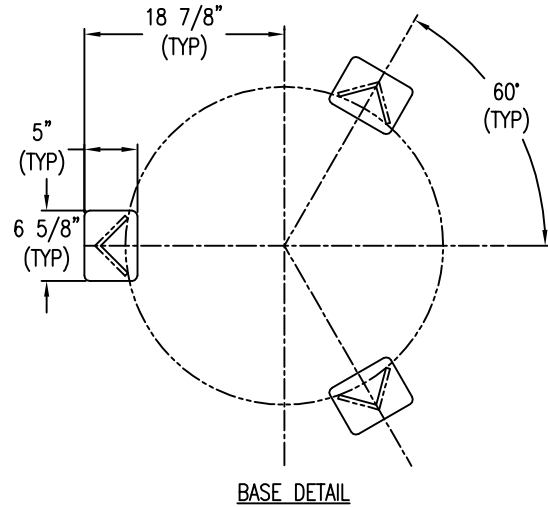


APP'L	DATE	LVL	ECN



- NOTES:**
- 1) VESSEL BUILT TO THE ASME CODE PLUS CURRENT ADDENDA.
 - 2) VESSEL STAMPED WITH "U" SYMBOL.
 - 3) MAXIMUM WORKING PRESSURE: 720 PSIG.
 - 4) VESSEL DESIGN TEMPERATURE: -20°F TO 120°F.
 - 5) VOLUME: 28.4 CUBIC FEET.
 - 6) CAPACITY: 212 GALLONS.
 - 7) APPROXIMATE WEIGHT: 1950 LBS.
 - 8) VESSEL EXTERIOR COATING: ALKYD PRIMER WITH WHITE ENAMEL FINISH.
 - 9) FLANGE BOLT HOLES STRADDLE CENTERLINES.



PT # 80-1466

THIS DRAWING IS THE PROPERTY OF
VAN AIR INC.

**GAS DRYER
PLD30-7.2**

AND IS SUBJECT TO RETURN UPON REQUEST. IT SHALL NOT BE COPIED OR DUPLICATED IN ANY MANNER AND SHALL NOT BE SUBMITTED TO OUTSIDE PARTIES FOR EXAMINATION WITHOUT THE CONSENT OF VAN AIR INC. IT SHALL BE USED FOR REFERENCE TO WORK UNDER CONTRACT OR PROPOSALS SUBMITTED BY VAN AIR INC. ONLY.

DRWN BY: JMY	DATE: 04-18-08	DRWG No. SD-14347	REV
CHECKED:	SCALE: NONE		

APP'L: **VAN GAS TECHNOLOGIES™**