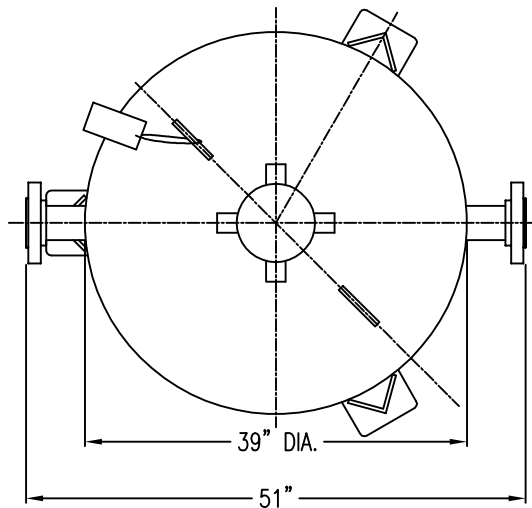
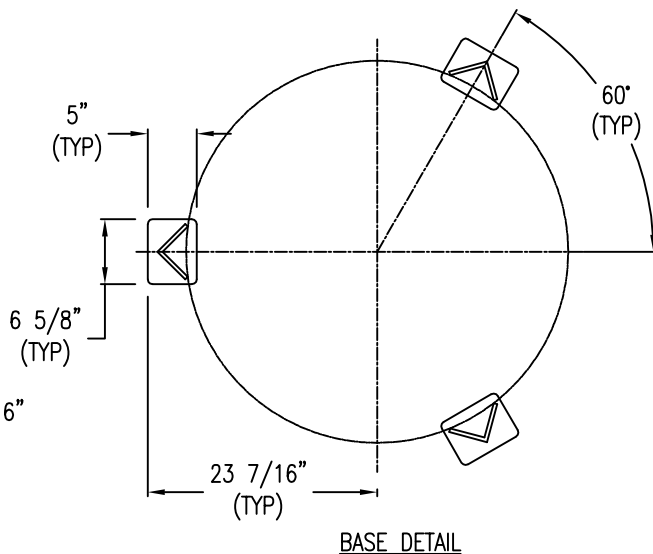
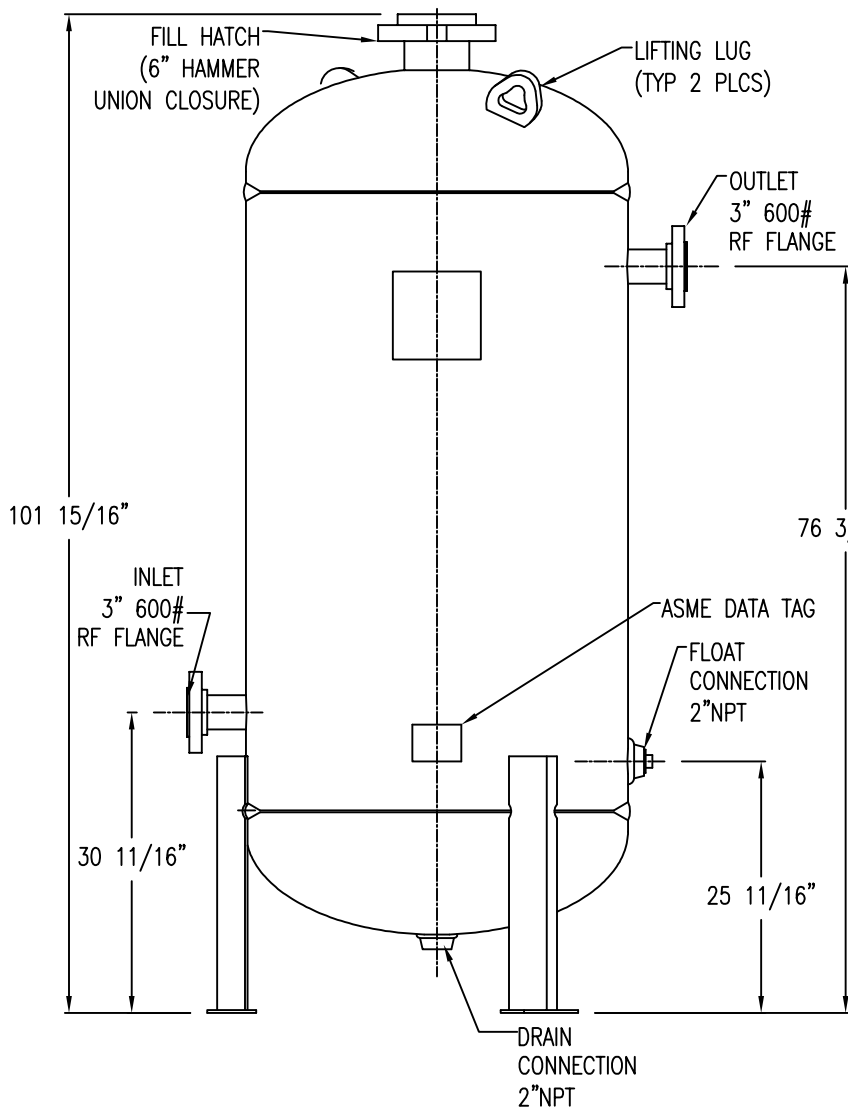


APP'L	DATE	LVL	ECN



- NOTES:**
- 1) VESSEL BUILT TO THE ASME CODE PLUS CURRENT ADDENDA.
 - 2) VESSEL STAMPED WITH "U" SYMBOL.
 - 3) MAXIMUM WORKING PRESSURE: 1450 PSIG.
 - 4) VESSEL DESIGN TEMPERATURE: -20°F TO 120°F.
 - 5) VOLUME: 46.6 CUBIC FEET.
 - 6) CAPACITY: 349 GALLONS.
 - 7) APPROXIMATE WEIGHT: 4990 LBS.
 - 8) VESSEL EXTERIOR COATING: ALKYD PRIMER WITH WHITE ENAMEL FINISH.
 - 9) FLANGE BOLT HOLES STRADDLE CENTERLINES.



PT# 80-1486

THIS DRAWING IS THE PROPERTY OF
VAN AIR INC.

AND IS SUBJECT TO RETURN UPON REQUEST. IT SHALL NOT BE COPIED OR DUPLICATED IN ANY MANNER AND SHALL NOT BE SUBMITTED TO OUTSIDE PARTIES FOR EXAMINATION WITHOUT THE CONSENT OF VAN AIR INC. IT SHALL BE USED FOR REFERENCE TO WORK UNDER CONTRACT OR PROPOSALS SUBMITTED BY VAN AIR INC. ONLY.

**GAS DRYER
PLD36-14.5**

DRWN BY: JMY	DATE: 05-12-09	DRWG No.	SD-14434	REV
CHECKED:	SCALE: NONE			
APP'L:				

VAN GAS TECHNOLOGIES™