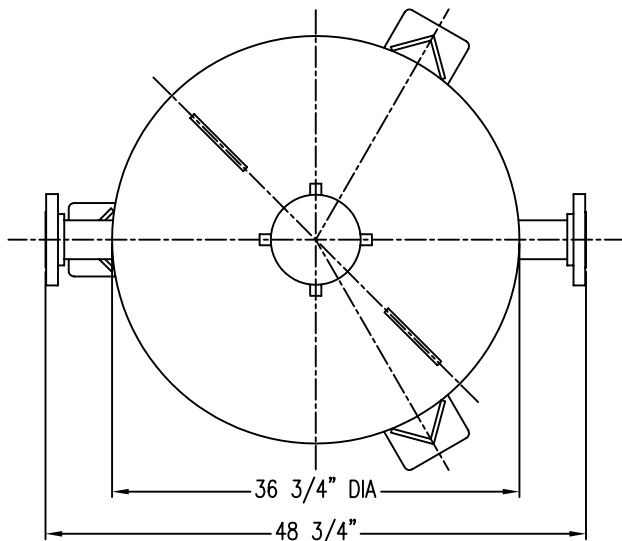
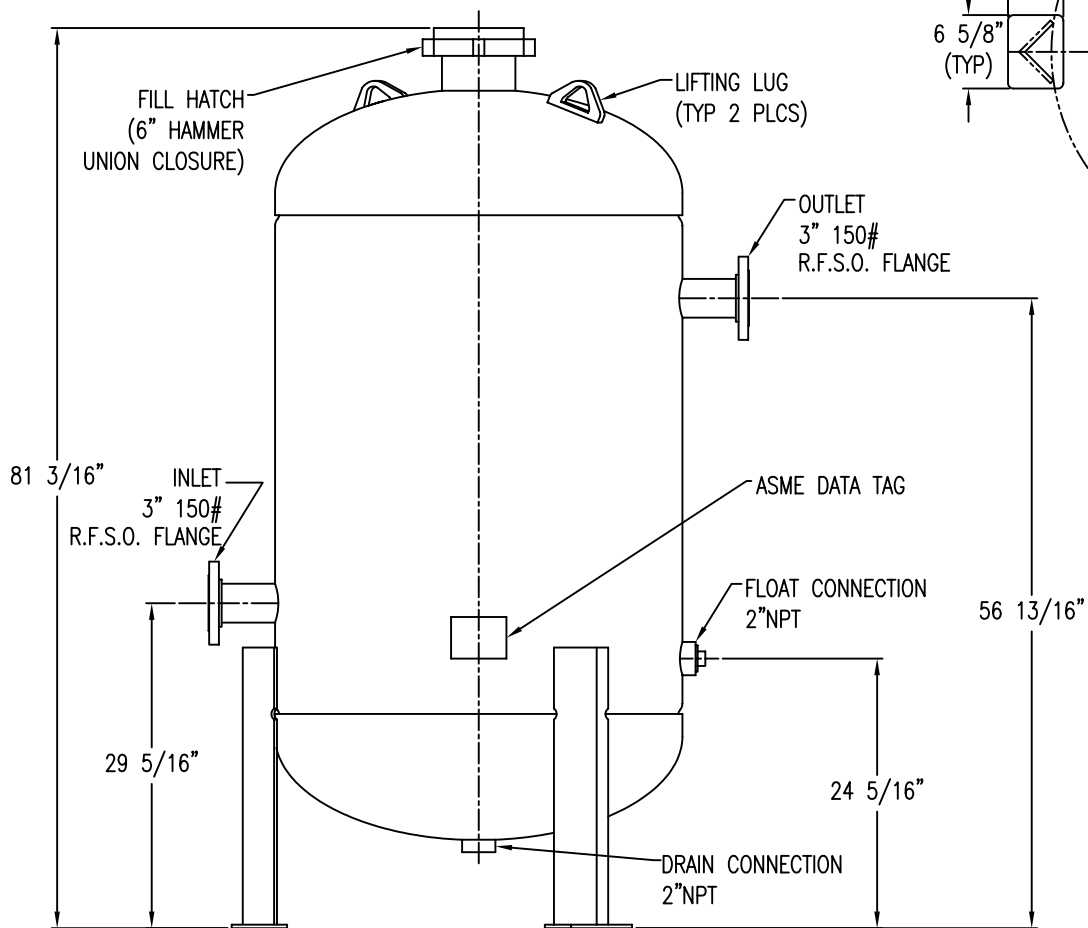
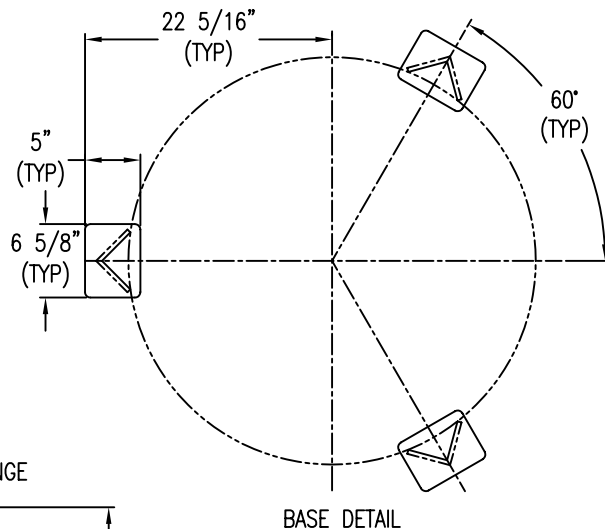


APP'L	DATE	LVL	ECN



**NOTES:**

- 1) VESSEL BUILT TO THE ASME CODE PLUS CURRENT ADDENDA.
- 2) VESSEL STAMPED WITH "U" SYMBOL.
- 3) MAXIMUM WORKING PRESSURE: 280 PSIG.
- 4) VESSEL DESIGN TEMPERATURE: -20°F TO 120°F.
- 5) VOLUME: 36.0 CUBIC FEET.
- 6) CAPACITY: 269 GALLONS.
- 7) APPROXIMATE WEIGHT: 1100 LBS.
- 8) VESSEL EXTERIOR COATING: ALKYD PRIMER WITH WHITE ENAMEL FINISH.
- 9) FLANGE BOLT HOLES STRADDLE CENTERLINES.



PT #80-1407

THIS DRAWING IS THE PROPERTY OF  
**VAN AIR INC.**

AND IS SUBJECT TO RETURN UPON REQUEST. IT SHALL NOT BE COPIED OR DUPLICATED IN ANY MANNER AND SHALL NOT BE SUBMITTED TO OUTSIDE PARTIES FOR EXAMINATION WITHOUT THE CONSENT OF VAN AIR INC. IT SHALL BE USED FOR REFERENCE TO WORK UNDER CONTRACT OR PROPOSALS SUBMITTED BY VAN AIR INC. ONLY.

**GAS DRYER**  
**PLD36-2.8-S (SHORT STYLE)**

DRWN BY: JMK	DATE: 06-10-04	DRWG No. SD-14083	REV
CHECKED:	SCALE: NONE		
APP'L:	<b>VAN GAS TECHNOLOGIES™</b>		