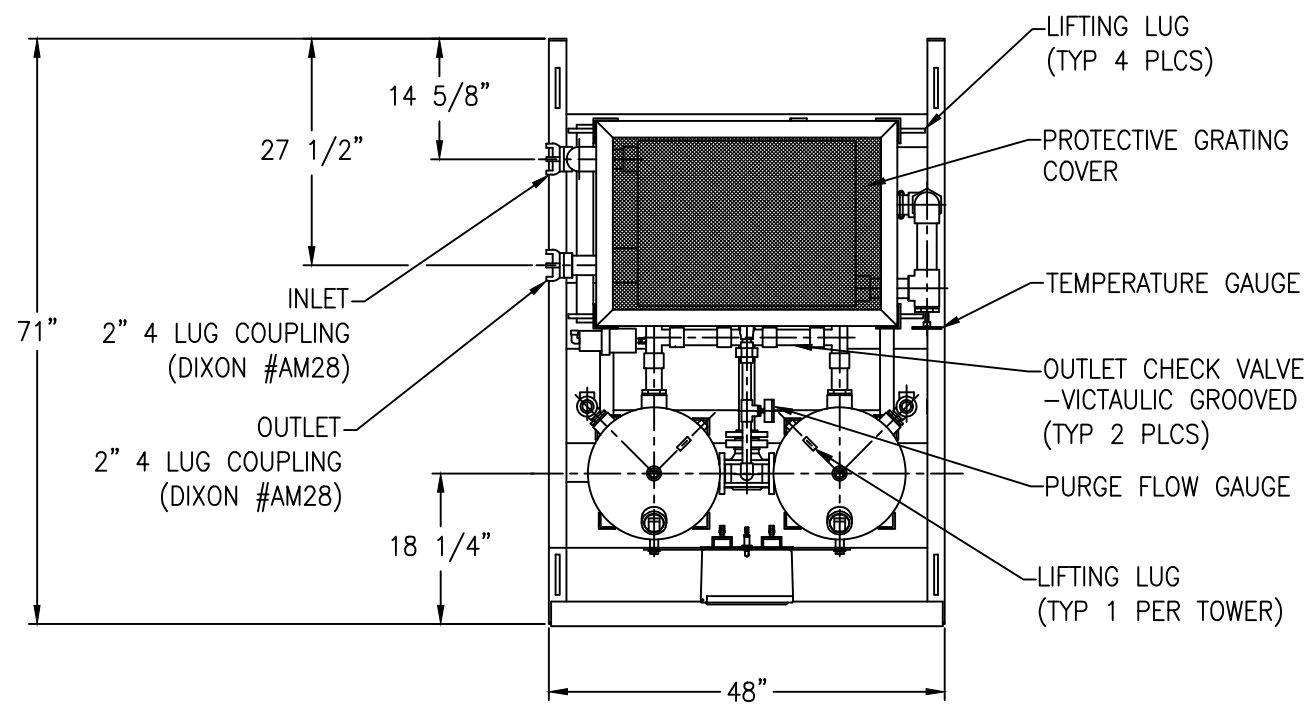
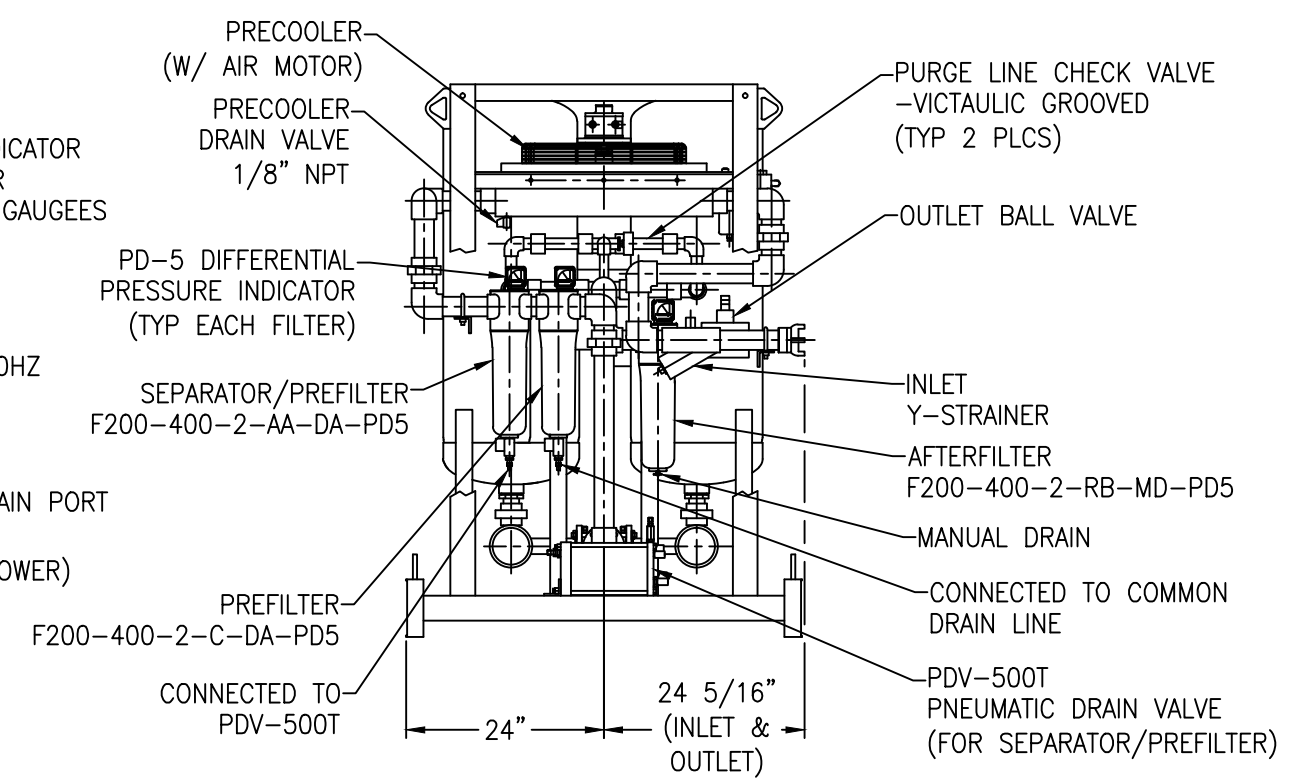
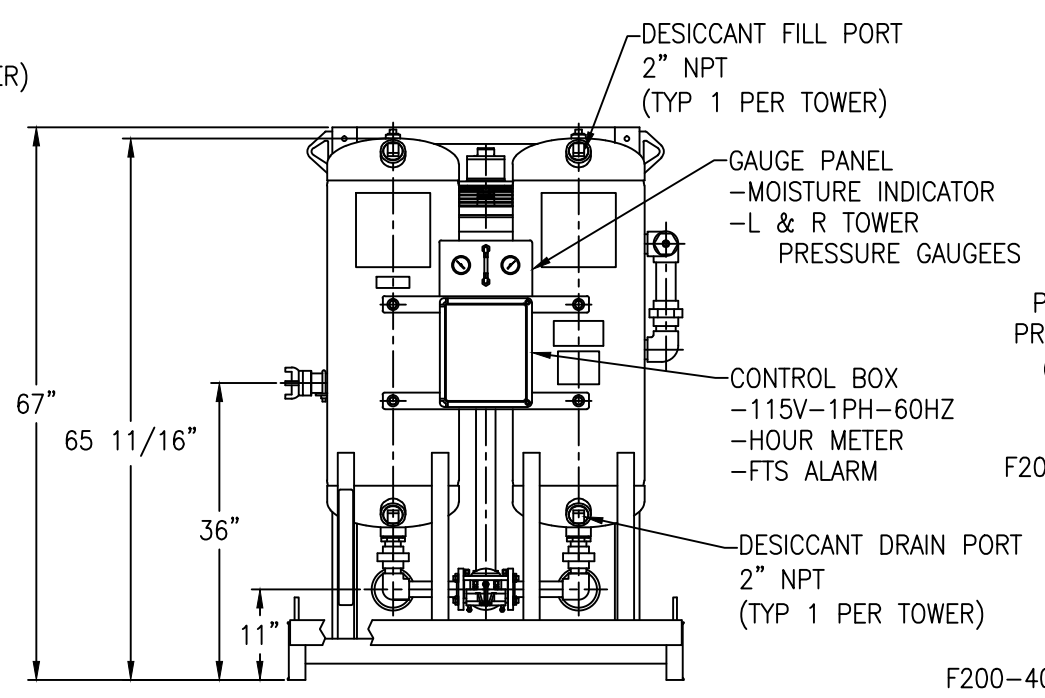
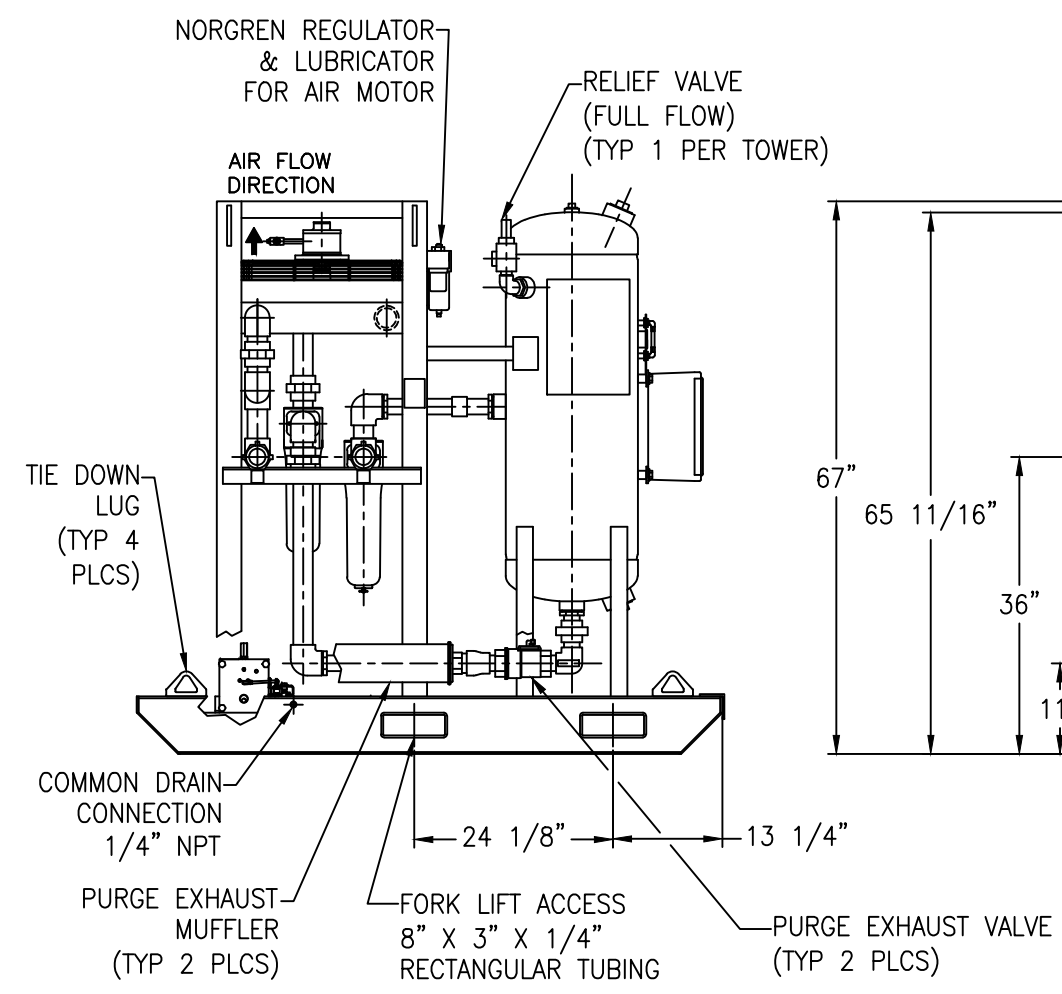


APP'L	DATE	LVL	ECN
DK	09-26-12	A	NO1455
	03-11-14	B	NO1517



- NOTES:**
- 1) SYSTEM MAXIMUM WORKING PRESSURE: 175 PSIG (WITH THE EXCEPTION THAT THE CUSTOMER REQUESTED IN/OUT COUPLINGS ARE RATED 150 PSIG).
 - 2) SYSTEM INLET RATING: 400 SCFM @ 100 PSIG, 150°F (PRECOOLER SIZED FOR 15°F APPROACH).
 - 3) DRYER VESSELS BUILT TO THE CURRENT EDITION OF THE ASME CODE SECTION VIII, DIV 1.
 - 4) DRYER VESSELS ARE STAMPED "UM" DESIGNATOR.
 - 5) EXTERIOR PAINT (EXCLUDING PRECOOLER): EPOXY PRIMER AND POLYURETHANE (SAFETY BLUE) FINISH.
 - 6) FLANGE BOLT HOLES STRADDLE CENTERLINES.
 - 7) DESICCANT (1/8" BEAD ACTIVATED ALUMINA): 430 LBS (215 LBS PER TOWER INSTALLED).
 - 8) APPROXIMATE WEIGHT OF UNIT: 1,360 LBS (WITHOUT DESICCANT).
 - 9) CONTROL AIR LINE CONTAINS A CONTROL AIR FILTER AND A CONTROL REGULATOR (NOT SHOWN). CONTROL AIR TUBING TO BE NYLON.
 - 10) AIR MOTOR EXHAUSTS TO A OIL MUFFLER MOUNTED TO THE PRECOOLER SUPPORT WITH NYLON TUBINGS.



THIS DRAWING IS THE PROPERTY OF VAN AIR SYSTEMS		PORTABLE DRYER SYSTEM	
		FR-400	PT #81-2441
DRWN BY: MGB	DATE: 07-06-10	DRWG No. SD-14542	REV B
CHECKED: DK	SCALE: NONE		
APP'L: DK	VAN AIR SYSTEMS		
A DIVISION OF VAN AIR INC. LAKE CITY, PA 16423 (814)774-2631 FAX:(814)774-4065			

AND IS SUBJECT TO RETURN UPON REQUEST. IT SHALL NOT BE COPIED OR DUPLICATED IN ANY MANNER AND SHALL NOT BE SUBMITTED TO OUTSIDE PARTIES FOR EXAMINATION WITHOUT THE CONSENT OF VAN AIR SYSTEMS. IT SHALL BE USED FOR REFERENCE TO WORK UNDER CONTRACT OR PROPOSALS SUBMITTED BY VAN AIR SYSTEMS ONLY.