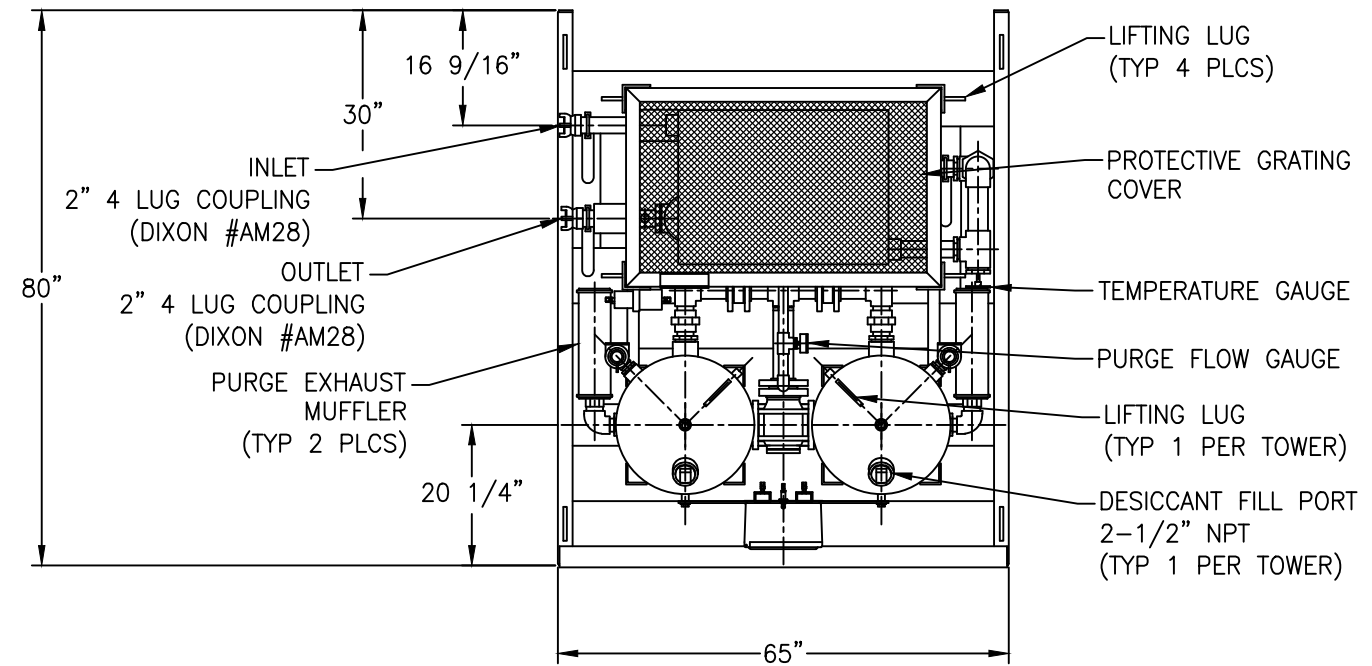
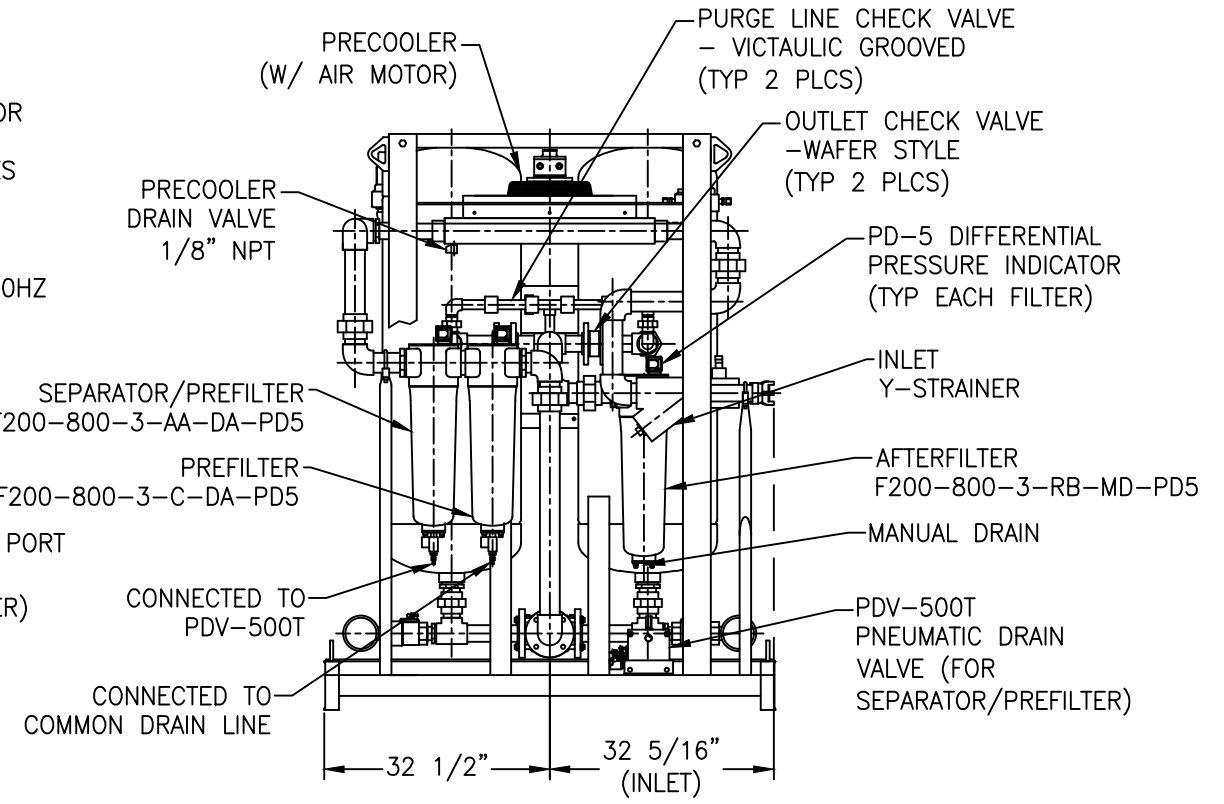
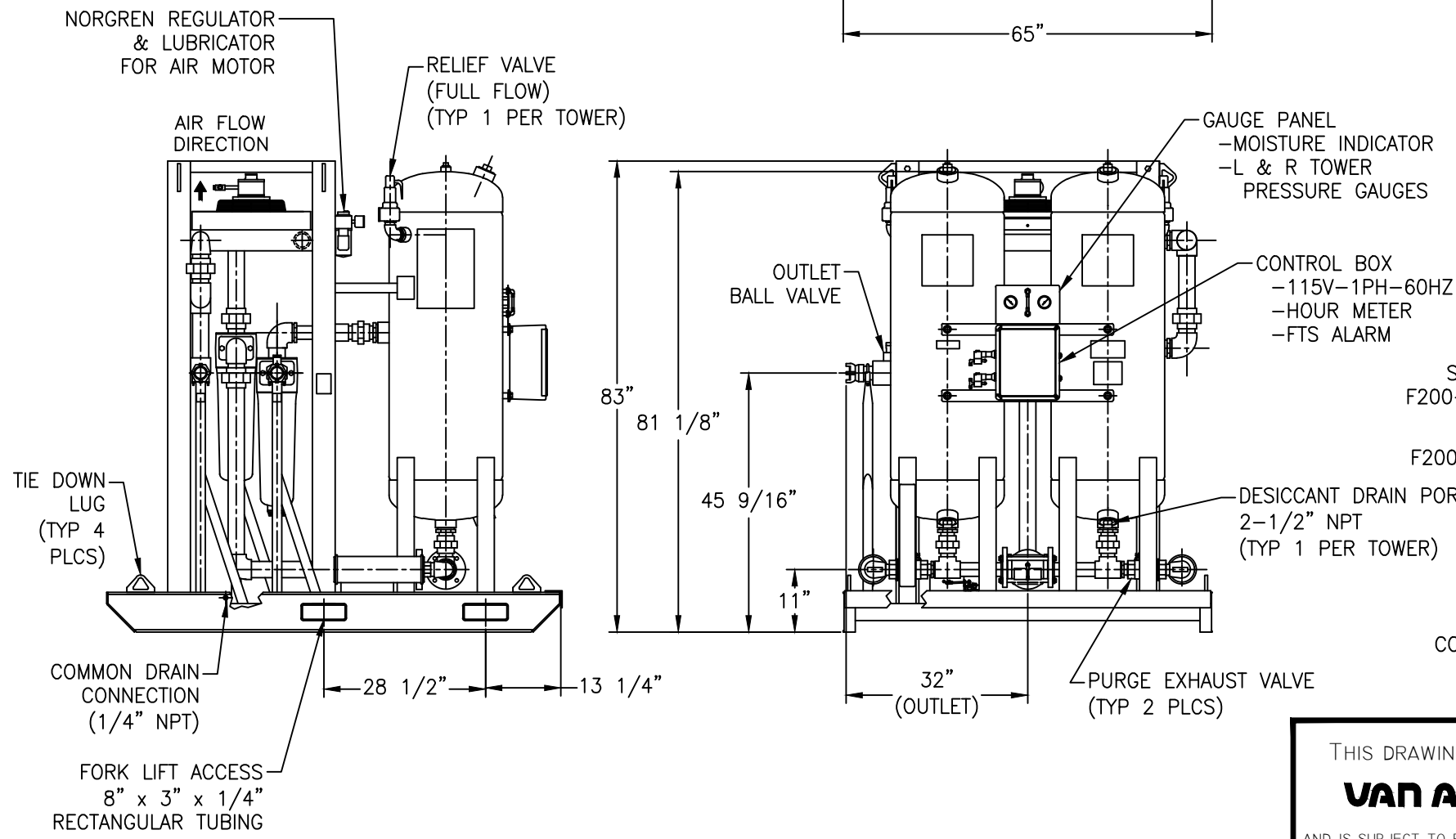


APP'L	DATE	LVL	ECN
DK	07-22-13	A	NO1497
	03-11-14	B	NO1518



- NOTES:**
- 1) SYSTEM MAXIMUM WORKING PRESSURE: 175 PSIG. (WITH THE EXCEPTION THAT CUSTOMER REQUESTED IN/OUT COUPLINGS ARE RATED 150 PSIG).
 - 2) SYSTEM INLET RATING: 800 SCFM @ 100 PSIG, 150°F (PRECOOLER SIZED FOR 15°F APPROACH).
 - 3) DRYER VESSELS BUILT TO THE CURRENT EDITION OF THE ASME CODE SECTION VIII, DIV 1.
 - 4) DRYER VESSELS ARE STAMPED "U" DESIGNATOR.
 - 5) EXTERIOR PAINT (EXCLUDING PRECOOLER): EPOXY PRIMER AND POLYURETHANE (SAFETY BLUE) FINISH.
 - 6) FLANGE BOLT HOLES STRADDLE CENTERLINES.
 - 7) DESICCANT (1/8" BEAD ACTIVATED ALUMINA): 880 LBS (440 LBS PER TOWER INSTALLED).
 - 8) APPROXIMATE WEIGHT 2400 LB (WITHOUT DESICCANT).
 - 9) CONTROL AIR LINE CONTAINS A CONTROL AIR FILTER AND A CONTROL REGULATOR (NOT SHOWN). CONTROL AIR TUBING TO BE NYLON.
 - 10) AIR MOTOR EXHAUSTS TO AN OIL MUFFLER MOUNTED TO THE PRECOOLER SUPPORT WITH NYLON TUBING.



THIS DRAWING IS THE PROPERTY OF VAN AIR SYSTEMS		PORTABLE DRYER SYSTEM		
		FR-800		PT #81-2442
DRWN BY: MGB	DATE: 09-11-12	DRWG No.	SD-14663	
CHECKED: DK	SCALE: NONE			
APP'L: DK	VAN AIR SYSTEMS		REV B	

AND IS SUBJECT TO RETURN UPON REQUEST. IT SHALL NOT BE COPIED OR DUPLICATED IN ANY MANNER AND SHALL NOT BE SUBMITTED TO OUTSIDE PARTIES FOR EXAMINATION WITHOUT THE CONSENT OF VAN AIR SYSTEMS. IT SHALL BE USED FOR REFERENCE TO WORK UNDER CONTRACT OR PROPOSALS SUBMITTED BY VAN AIR SYSTEMS ONLY.